

# Onenuts Nut 5 Intel Mini PC Apollo lake Windows 10 64-bit Support 4K SATA MSATA Dual HDMI Mini Computer



## Specifications

Model No.	Onenuts Nut 5 Intel Mini PC Apollo lake
CPU	Support Intel® Core™ Apollo Lake Celeron DC or QC, J3355/J3455/J4205
Memory	DDR3-1600 SO-on bard slot,max to 8GB
Storage Interface	1*SATAIII 6Gb/s SSD/HDD(7 thickness), 1*M-SATA(support 32GB/64GB/128GB/258GB SSD)
Onboard Graphics	Intel® HD Graphics500 1*HDMI 1.4
LAN	Built-in Realtek RTL8111F LAN chip
Audio	Cmedia hs100b
Wireless	Dual Band WiFi support 2.4 GB/5.0 GB/ 3165d
Front I/O Port	2* USB 3.0 2* USB 2.0
Back I/O Port	1* DC_IN 2* HDMI(1.4a) 1* VGA 1* RJ45 1* TF-card 1* MIC 1* Audio
BIOS	AMI EFI BIOS
Power Supply	12V/2.5A AC adapter
Operating System	Windows 10(64 bits), Linux
VESA	Bracket included and screws
Environment	0~35 degree celcius
Dimension	128*128*45mm
Color	Iron Grey, black, Silver

Why choose Onenuts Nut 5 Intel Mini PC Apollo lake Windows 10 64-bit Support 4K SATA MSATA Dual HDMI Mini Computer?

1. Bring back the Functionality and Productivity in the same equation: The Onenuts Nut 5 Windows 10 HTPC is powered by the Intel Apollo Lake Celeron J3455 Chipset with speeds up to 2.3Ghz under heavy load. This is a 64bit #4 Core / #4 Thread Desktop Processor supporting a vast majority of Intel's Advanced Technologies such as Secure Boot, Intel Virtualization Technology (VT-x), Intel HD Audio Technology, Secure Key, etc..

2. The Onenuts Nut 5's Graphics are provided by the On-Board Integrated Intel HD Graphics 500 Chip, which: Combined with the 2x HDMI 1.4 Ports located on the back of the unit allow you to run a Dual-

Desktop scenario with no issues.

3. In terms of connectivity, the Onenuts Nut 5 offers a RJ45 1GB/s Ethernet Port located at the back, a Dual-Band Wi-Fi Configuration and a Bluetooth 4.1 Adapter.

4. This HTPC is small, yet powerful: The Onenuts Nut 5 is perfect for day-to-day tasks and office work.

5. A VESA Bracket is included in the box, perfectly concealing the unit on the back of your TV or Monitor.



4 core  
CPU

Penta-Core  
HD Graphics  
GPU

4K  
ULTRA HD

5G  
WIFI

2\*USB2.0  
2\*USB3.0

OS  
Windows 10

1000M  
Ethernet

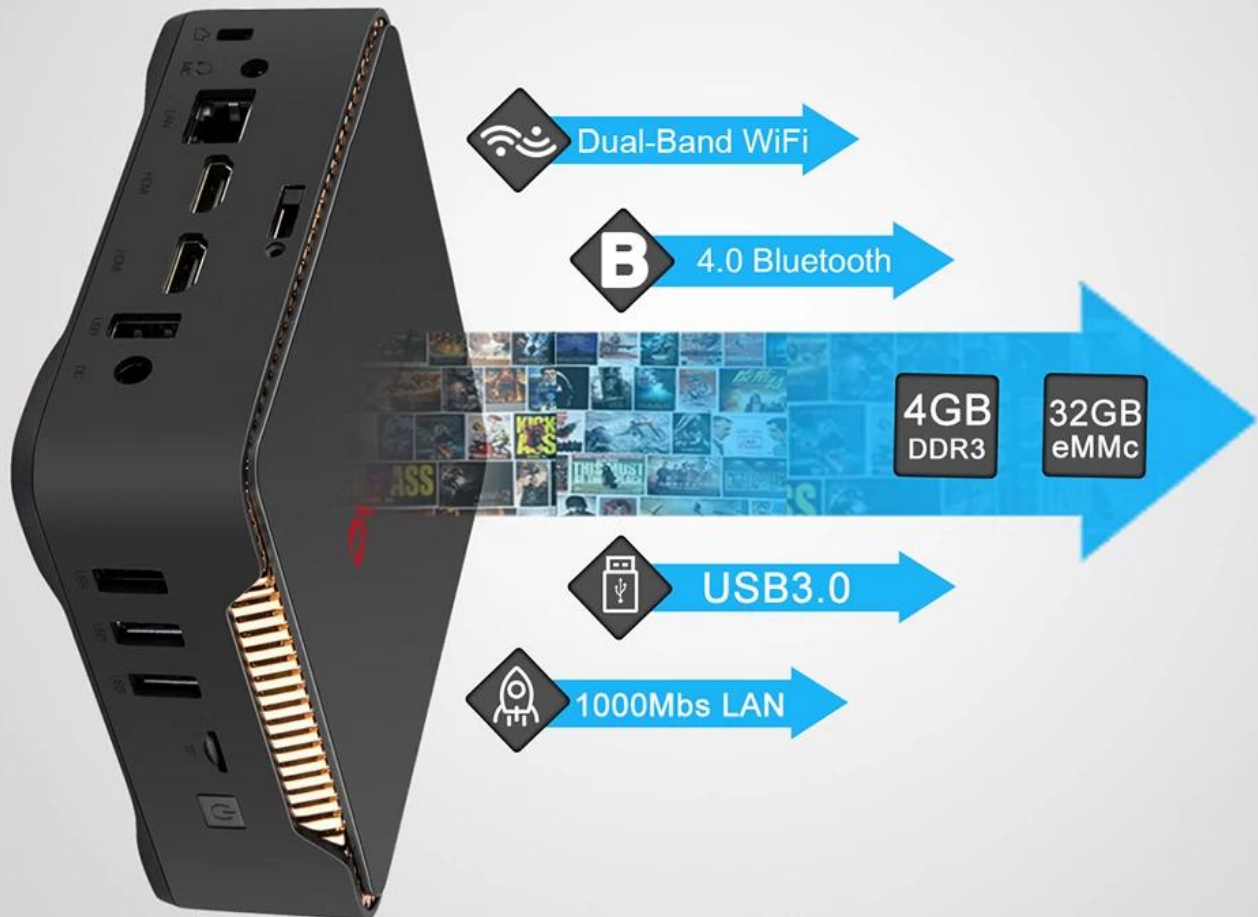
Expansion  
Hard disk  
Up to 2TB

Apollo Lake

A detailed illustration of an Apollo Lake processor chip mounted on a complex circuit board. The chip is square with a metallic finish and the text 'Apollo Lake' printed on it. The circuit board features intricate blue and white traces, with a bright blue glow emanating from the area around the chip, suggesting high performance or power. The background is dark, making the glowing components stand out.

## Stable Internet Connectivity ,Smooth Date Transfer

play your HD games and 4K resolution  
videos at full bore





APOLLO LAKE

# High performance mini office

play games/Office/Household/Commercial

Small convenient

full functioning

Easy to install



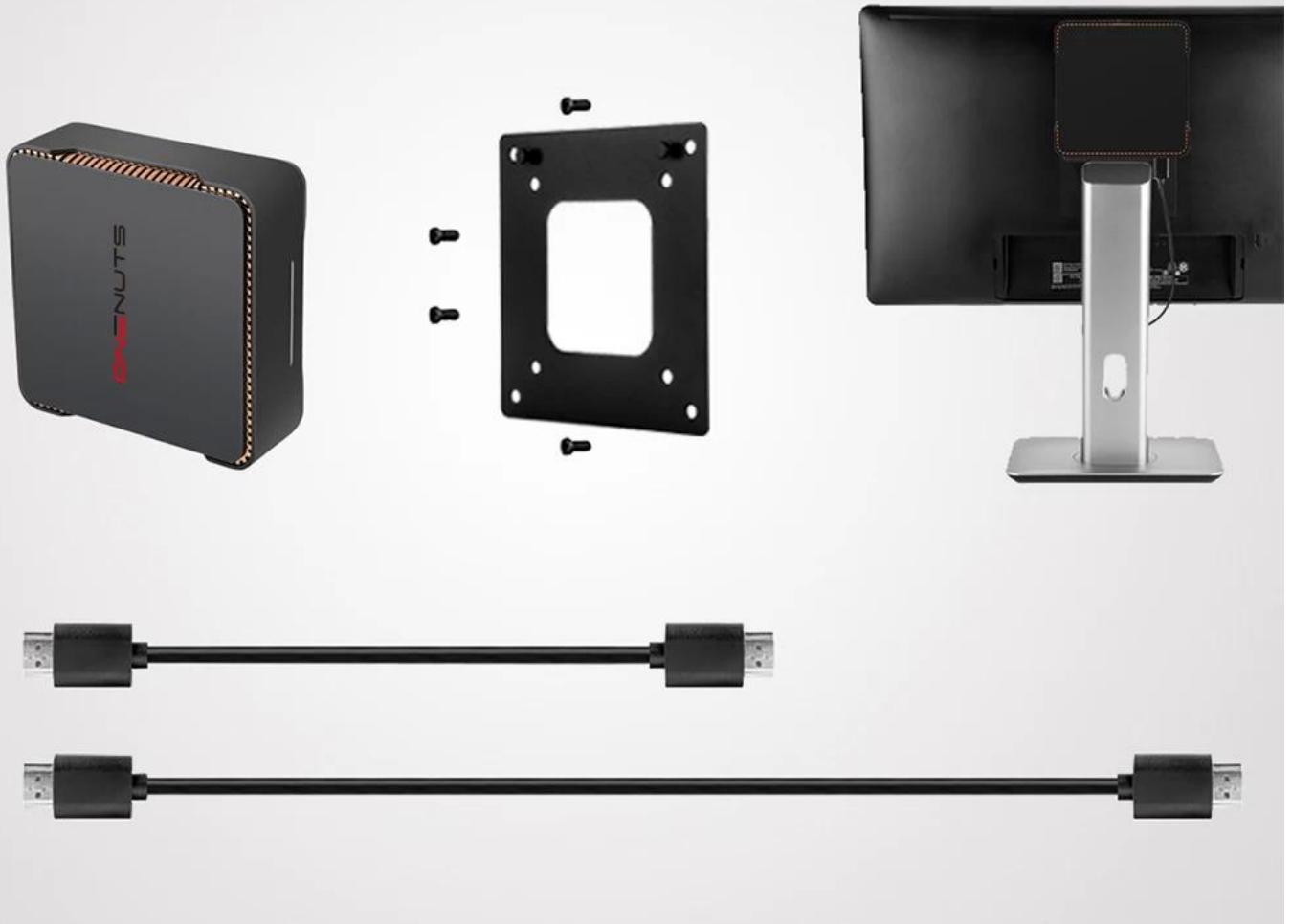
## Support 2 x HDMI & 1 x VGA Triple Display

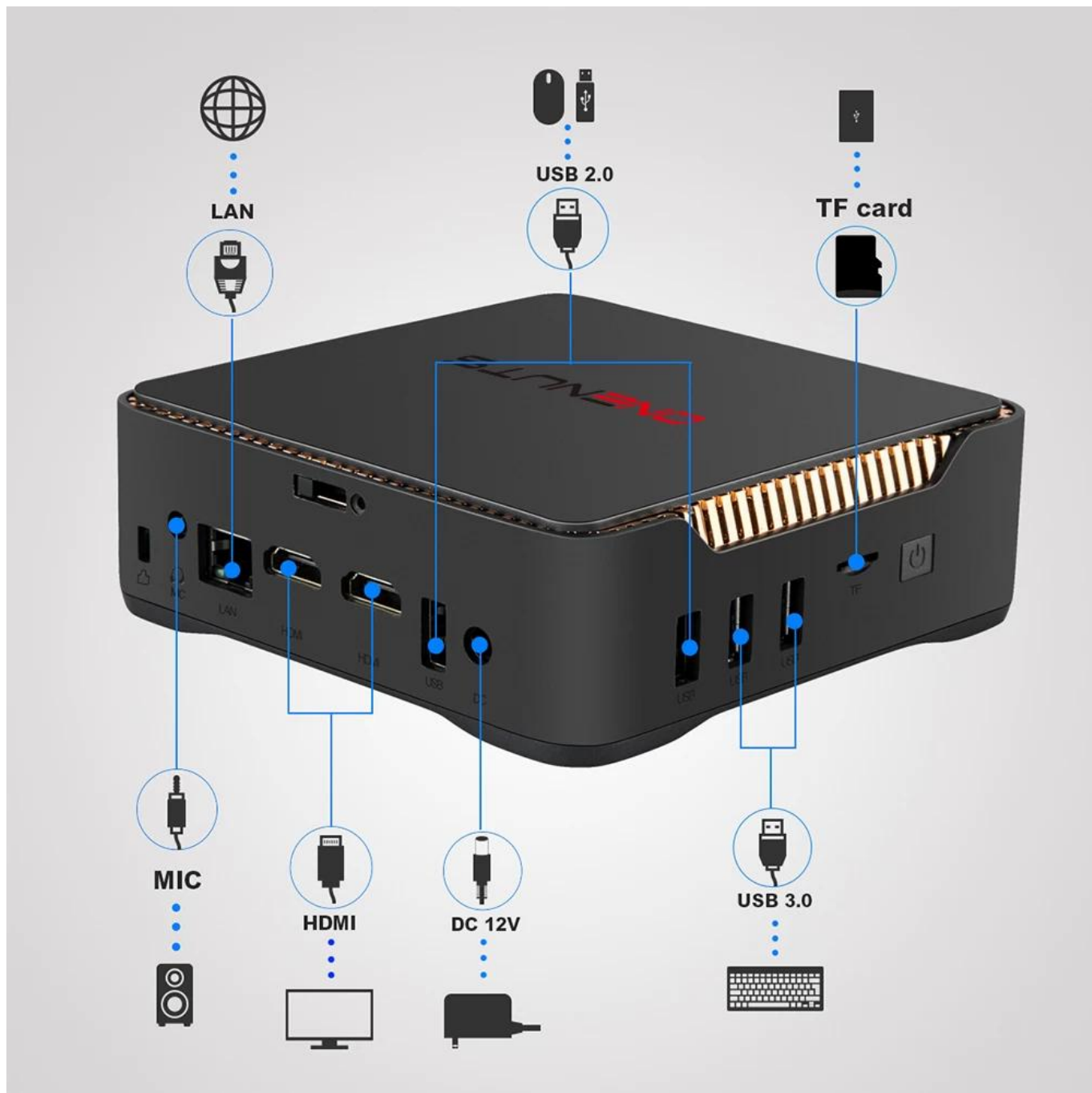
Ultra-High Definition 4K Triple-Display Ready, allowing easy connection for up to three displays via the 2 HDMI and one VGA outputs.



**Bundled with a VESA bracket**

**Mini computer can easily be mounted behind a monitor or HDTV**





The Onenuts Nut 5 Intel Mini PC offers a feature-rich computing experience suitable for a wide range of applications. Here are the key highlights that make it a versatile and efficient choice:

### **1. Apollo Lake Architecture:**

Powered by Intel's Apollo Lake architecture, the Nut 5 mini PC delivers reliable performance for everyday computing tasks, multimedia streaming, productivity applications, and more.

### **2. Windows 10 64-bit Operating System:**

Experience the latest features and security enhancements of Windows 10, ensuring compatibility with a vast array of software applications and peripherals.

### **3. Support for 4K Resolution:**



Enjoy crisp and detailed visuals with support for 4K Ultra HD resolution, making it ideal for multimedia content consumption, digital signage, and video editing.

#### **4. Storage Flexibility:**

The Nut 5 supports both SATA and MSATA storage options, allowing users to choose the storage solution that best fits their needs for speed, capacity, and reliability.

#### **5. Dual HDMI Outputs:**

With dual HDMI outputs, the mini PC can easily connect to multiple displays or monitors, providing a versatile setup for multitasking, presentations, and entertainment.

#### **6. Compact and Space-Saving Design:**

The compact form factor of the Nut 5 makes it suitable for small desks, home entertainment setups, digital signage applications, and kiosks where space is limited.

#### **7. Connectivity Options:**

The mini PC comes with a range of connectivity options, including USB ports, Ethernet, Wi-Fi, Bluetooth, audio jacks, and more, ensuring seamless integration with peripherals and networks.

#### **8. Energy-Efficient Operation:**

The Nut 5 is designed for energy efficiency, consuming less power compared to traditional desktop computers without compromising performance, making it an eco-friendly choice.

#### **9. Quiet and Reliable Performance:**

Benefit from quiet operation and reliable performance, thanks to intelligent cooling systems and high-quality components that ensure optimal functionality under varying workloads.

#### **10. Versatile Applications:**

From home entertainment to office productivity and digital signage, the Nut 5 caters to a diverse range of applications, providing a convenient and capable computing solution.

#### **Conclusion:**

The Onenuts Nut 5 [Intel Mini PC](#) with Apollo Lake architecture, Windows 10 compatibility, 4K support, storage flexibility, and connectivity options offers users a reliable and versatile computing experience. Upgrade your setup with the Nut 5 for enhanced productivity, multimedia enjoyment, and efficient performance in a compact package.