

Google Android 5.1 tv caixa chipset S905 Quad core HDMI 2.0 4K S9

Especificações de hardware	
Modelo no.	S9
CPU	Amlogic S905 Quad-Core ARM Cortex™-A53 CPU até 2,0 GHz (ARM1176)XFS)
GPU	Penta-Core Mali-450 acima de 750 Mhz +
FLASH	8GB
DDR3	1GB DDR3
Módulo	Alumínio: Cor preta
Poder	
Poder Abastecimento de	DC 5V/2A
Poder Indicador (LED)	DIODO EMISSOR DE LUZ indicador, working: azul, Standby: Red Standby Power: < 0.5 w
Software de	
SISTEMA OPERACIONAL	Pirulito Android™ 5.1
Vídeo	H.265 HEVC MP-10@L5.1 até 4Kx2K@60fps
	H. 264 AVC HP™@L5.1 até 4Kx2K@30fps
	H. 264 MVC até 1080P@60fps
	MPEG-4 ASP@L5 até 1080P@60fps (ISO-14496)
	WMV/VC-1 SP/MP/AP até 1080P@60fps
	AVS-P16(AVS+) / Perfil AVS-P2 até 1080P@60fps
	MPEG-2 MP/HL até 1080P@60fps (ISO-13818)
	MPEG-1 MP/HL até 1080P@60fps (ISO-11172)
	RealVideo 09/08/10 até 1080p
	WebM até VGA
	Múltiplas Linguagem e múltiplo suporte de formato vídeo subtítulo
	MJPEG e JPEG ilimitado Pixel resolução Decoding(ISO/IEC-10918)
	Suporta Miniatura de JPEG, escala, rotação e efeitos de transição
Suporta *.mkv, WMV, *.mpg, *. MPEG, *. dat, *. avi, *.mov, *. ISO, *. MP4, *.rm e *. jpg Formatos de arquivo	
Áudio	Baixa Poder MediaCPU com DSP de processamento de áudio
	Suporta MP3, AAC, WMA, RM, FLAC, Ogg e programável com 5.1 para baixo-mistura
	Built-in Entrada/saída SPDIF/IEC958 e áudio Digital Serial PCM
Imagem	HD JPEG, BMP, GIF, PNG, TIF
Suporte língua	Chinês Inglês, Alemanha, japonês, Coreia etc. Multi línguas
I/O	
1 * HDMI™	K * 2 4K UHD saída, HDMI™ 2.0
1 * AV PARA FORA	480i/576i Saída de definição padrão
3 * USB	2 * USBHost Porto, 1 * dispositivo USB
1 * ÓPTICO	Digital Saída de áudio
1 * RJ45	Ethernet Interface de LAN 1000M,

1 * SD™/MMC CARTÃO	Suporte 4GB/8GB/16GB/32GB/64GB
Appliactions	
On-line	Procurar todos os sites de vídeo, suporte a Netflix, Hulu, Flixster, Youtube, etc.
Apps	Apps baixar livremente o mercado android forma, amazon™ loja app etc.
Médio	Local Reprodução de mídia, suporte HDD, Disck U, SD™/MMC Card.
Falar On-line	Suporte Chamada de vídeo do SKYPE, MSN, facebook, twitter, QQ etc.
Outros	Suporte E-mail, escritório terno etc. Suporte Função DLNA Suporte 2.4 Mouse/teclado sem fio G



Picture Show



Indicator



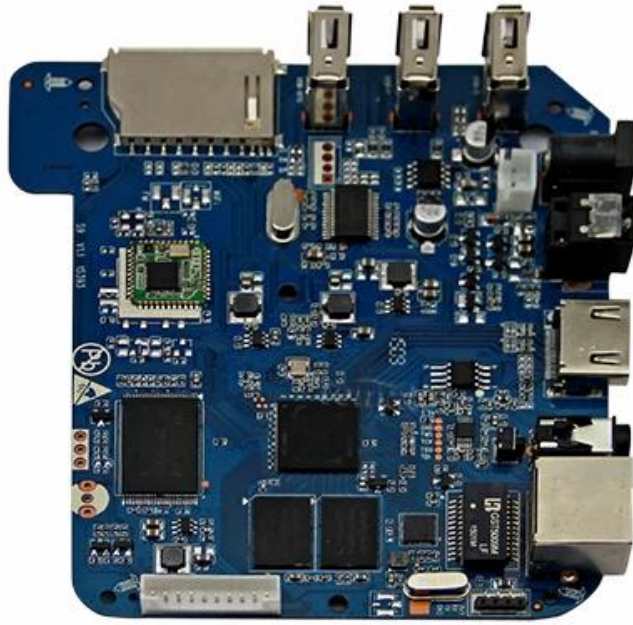
USB*3

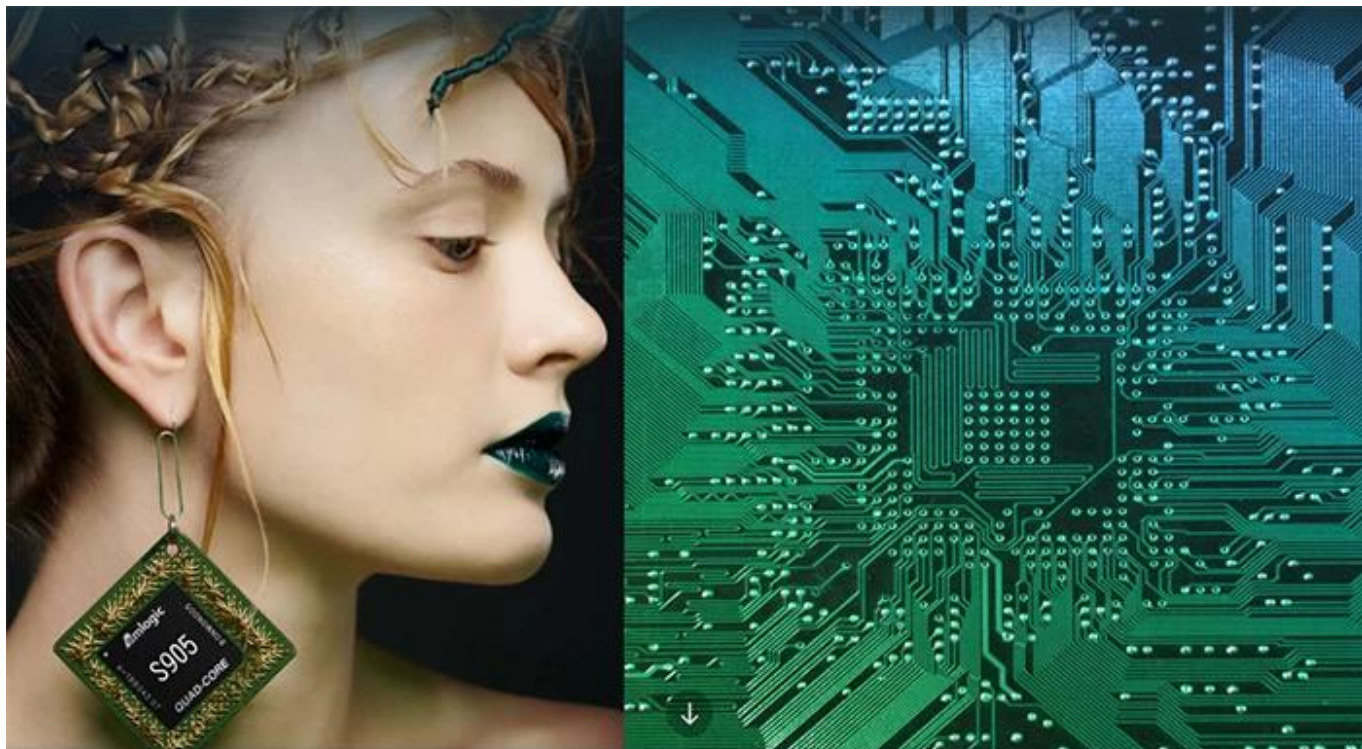
SD/MMC Card



ON/OFF Button DC Port RJ45 ETHERENT AV Port HDMI™ OPTICAL Port







S905

64-Bit
Quad Core
Cortex A53

4K

H.265
@60fps

HDMI 2.0
HDCP 2.2

TSMC
28NM

DRM



64 bit CPU,

While maintaining the same power consumption, the computing power of CPU has also been greatly improved.

With 4K2K decoding capabilities,
it make 4K become the standard.



The color quantity is increase by 60 times more than the previous generation.



10 bit decoding, it could highest support 1.07 billion color,
Compared to the previous generation of 16.7 million colors, it increase by 60 times.

The sound upgrade,
while supporting Dolby Digital Plus and DTS.



3 + 2 core high-frequency GPU,
it make the TV turn into the PlayStation.



The single core CPU frequency increase of 25%, 5-core computing speed can be achieved by the previous generation 8-core, it allowing you to experience smooth gaming.

Support 802.11ac WiFi protocol.

200 Mbps
实际速率

120 Mbps
上一代实际速率



Wireless projection the image&video
of the phone/computer onto the TV.



Miracast



Airplay



DLNA



SMB
共享协议



Intel@WIDI

Equipped with smart contiguous
memory allocation technology,
make the system running more smoothly.



4.1



Bluetooth[®]



HD2.0
Image output



HD1.0
Image output

Home entertainment, perfect enjoyment

- Extreme graphics, HD2.0 Image output
 - 1000M Ethernet LAN
-



Unforgettable visual
experience.

1920 * 1080 HD



Support 3D



1080P



Ultra Wide Vision

It's all about speeding up.



1G DDR3 dual channel memory and 8GB eMMC high speed flash memory.

The dual channel memory runs 1080p HD videos and large games flawlessly,
while the eMMC high speed flash memory controls apps, games, and multi-media storage with ease.

Everything comes alive with 3D.



Experience home entertainment in 3D!



S905

One of industry's first multimedia SoCs with 64-bit architecture, S905 is designed to deliver immersive theatre-level home entertainment to the users with excellent audio and video processing capabilities. It also supports operator-level security and is a perfect choice for OTT/IPTV/DVB STB, TV dongle and smart home applications.