

# Amlogic S905W4 SOC 5G 雙頻雙模 4K\*2K 電視盒

## 雙頻雙模 4K\*2K 電視盒 Dual Band

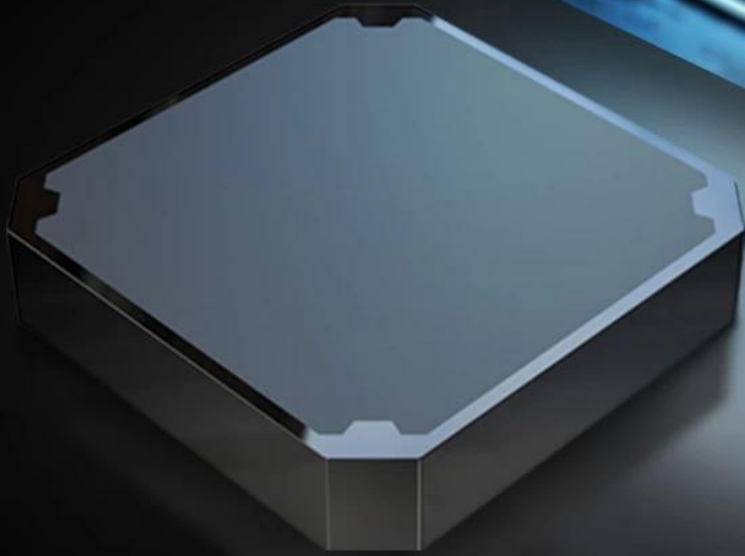
|      |      |  |
|------|------|--|
| 產品名稱 |      | Amlogic S905W4 5G  |
| 產品型號 | 產品名稱 | Amlogic S905W4 雙頻雙模 ARM Cortex A53 @2GHz                               |
| 產品規格 | 產品名稱 | 雙頻雙模 Penta-core Mali-450MP GPU@750MHz, OpenGL ES 1.1/2.0 雙頻 OpenVG 1.1 |
| 產品容量 | 產品名稱 | DDR3:1GB(雙頻雙模:2GB)   |
| 產品接口 | 產品名稱 | EMMC:8GB/16GB  |
| WiFi | 產品名稱 | 雙頻雙模 W1: 2.4G & 5G; 雙頻雙模 WiFi IEEE 802.11 b/g/n/ac                     |
| 產品尺寸 | 產品名稱 | 產品尺寸: 雙頻雙模   |
| 產品重量 | 產品名稱 | 雙頻雙模 5V/2A   |
| 產品特點 | 產品名稱 | 1 * HDMI 雙頻雙模 4K*2K UHD, HDMI 2.0A                                     |
|      | 產品名稱 | 1 * 雙頻雙模 雙頻雙模 480i/576i  |
|      | 產品名稱 | 2 * 雙頻雙模 2 * 雙頻雙模 USB2.0   |
|      | 產品名稱 | 1* 雙頻雙模 IR 雙頻雙模 3.5 英寸, 雙頻雙模 雙頻雙模                                      |
|      | 產品名稱 | 1*RJ45 雙頻雙模 100M   |
|      | 產品名稱 | 1* 雙頻雙模 雙頻雙模   |
|      | 產品名稱 | SD   |

|      |      |  |
|------|------|--|
| 產品名稱 |      | 雙頻雙模 Android 9.0                                   |
| 產品規格 | 產品名稱 | * AMLogic video Engine (AVE) 雙頻雙模 雙頻雙模 雙頻雙模        |
| 產品特點 | 產品名稱 | * 雙頻雙模 "雙頻雙模" 雙頻雙模 雙頻雙模                            |
|      | 產品名稱 | * 雙頻雙模 / 雙頻雙模                                      |
|      | 產品名稱 | -VP9 雙頻雙模-2 雙頻雙模 4K*2K@30fps                       |
|      | 產品名稱 | -H.265 HEVC MP-10@L5.1 雙頻雙模 4K*2K@30fps            |
|      | 產品名稱 | -H.264 AVC HP@L5.1 雙頻雙模 4K*2K@30fps                |
|      | 產品名稱 | -H.264 MVC 雙頻雙模 1080P@60fps                        |
|      | 產品名稱 | -MPEG-4 ASP@L5 雙頻雙模 1080P@60fps(ISO-14496)         |
|      | 產品名稱 | -WMV/VC-1 SP/MP/AP 雙頻雙模 1080P@60fps                |
|      | 產品名稱 | -AVS-P16(AVS) /AVS-P2 雙頻雙模 JiZhun 雙頻雙模 1080P@60fps |
|      | 產品名稱 | -MPEG2 MP/HL 雙頻雙模 1080P@60fps                      |
|      | 產品名稱 | -MPEG1 MP/HL 雙頻雙模 1080P@60fps                      |
|      | 產品名稱 | -RealVideo 8/9/10 雙頻雙模 1080P@60fps                 |
| 產品接口 | 產品名稱 | HD JPEG, BMP, GIF, PNG, TIF                        |
| 產品尺寸 | 產品名稱 | 雙頻雙模 雙頻雙模 雙頻雙模 雙頻雙模 雙頻雙模 雙頻雙模                      |
| 產品重量 | 產品名稱 | 雙頻雙模 Netflix, Hulu, Flixster, Youtube 雙頻雙模         |
| 產品特點 | 產品名稱 | 雙頻雙模 Android Market, Amazon App Store 雙頻雙模         |
| 產品容量 | 產品名稱 | 雙頻雙模 HDD, 雙頻雙模 U, 雙頻雙模 SD/MMC                      |
| 產品接口 | 產品名稱 | 雙頻雙模 SKYPE, MSN, Facebook, Twitter, QQ 雙頻雙模        |
| 產品特點 | 產品名稱 | 雙頻雙模/雙頻雙模 2.4G                                     |

**4K**

**Android TV Box**

**5G**



**Amlogic**

S905W4

**CPU**

Cortex A53

**GPU**

Mali-450MP

**H.265**

HEVC

**4K**

**ANDROID**  
9.0

**Wi Fi**  
2.4G/5G  
802.11ac

# The Newest Chip-S905W4

TV Box is powered by the newest Amlogic S905W4 64-bit quad core ARM Cortex - A53 CPU and Mali-450 MP GPU processor.

## CPU

Quad-core  
Cortex-A53

## GPU

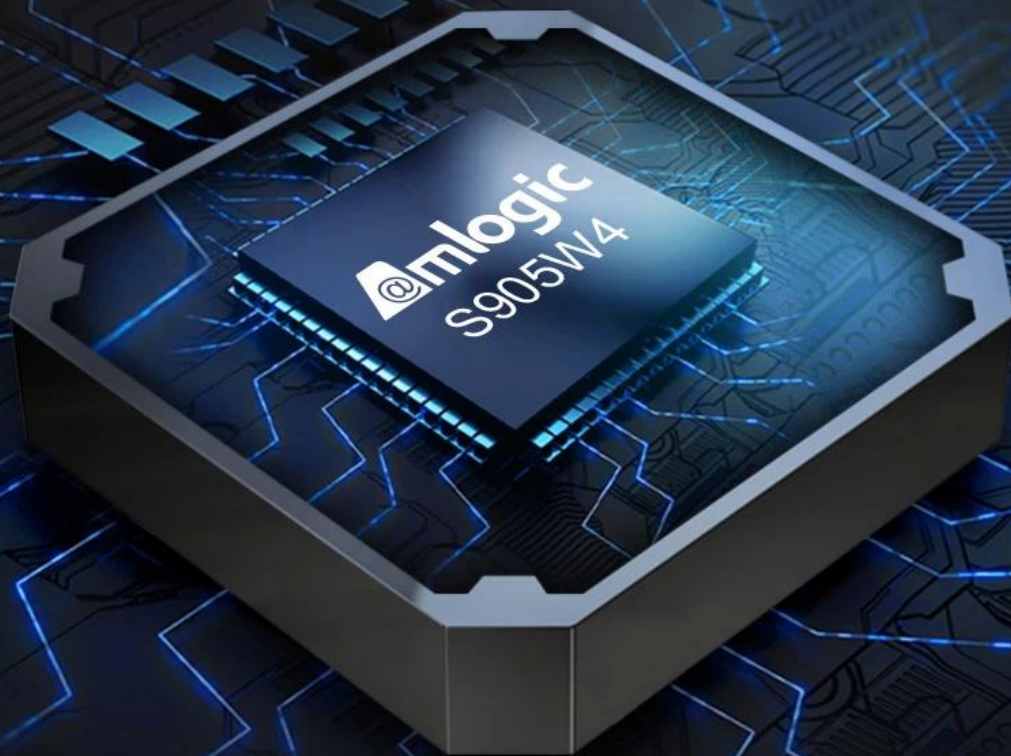
Mali-450MP

## Video

H.265 Main10@L5.1  
decoder up to 4K@30fps

## Display

HDMI 2.0a  
4K@30fps



GPU low power consumption, high performance density, no pressure to play games

## OpenGL ES 1.1/2.0 and OpenVG 1.1 support

|                                  |  |                                     |
|----------------------------------|--|-------------------------------------|
| <b>20%</b><br>Smaller total area | <b>20%</b><br>Better performance density | <b>12%</b><br>Better UI performance |
|----------------------------------|--|-------------------------------------|



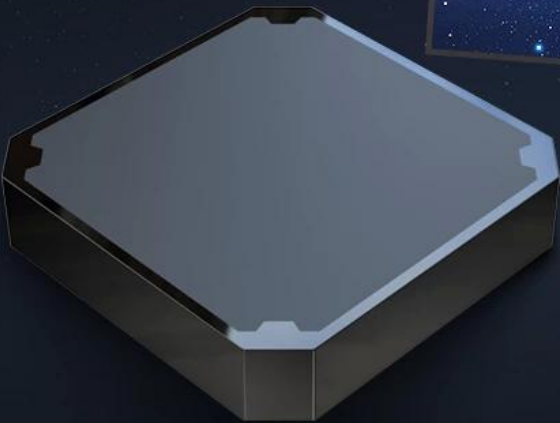
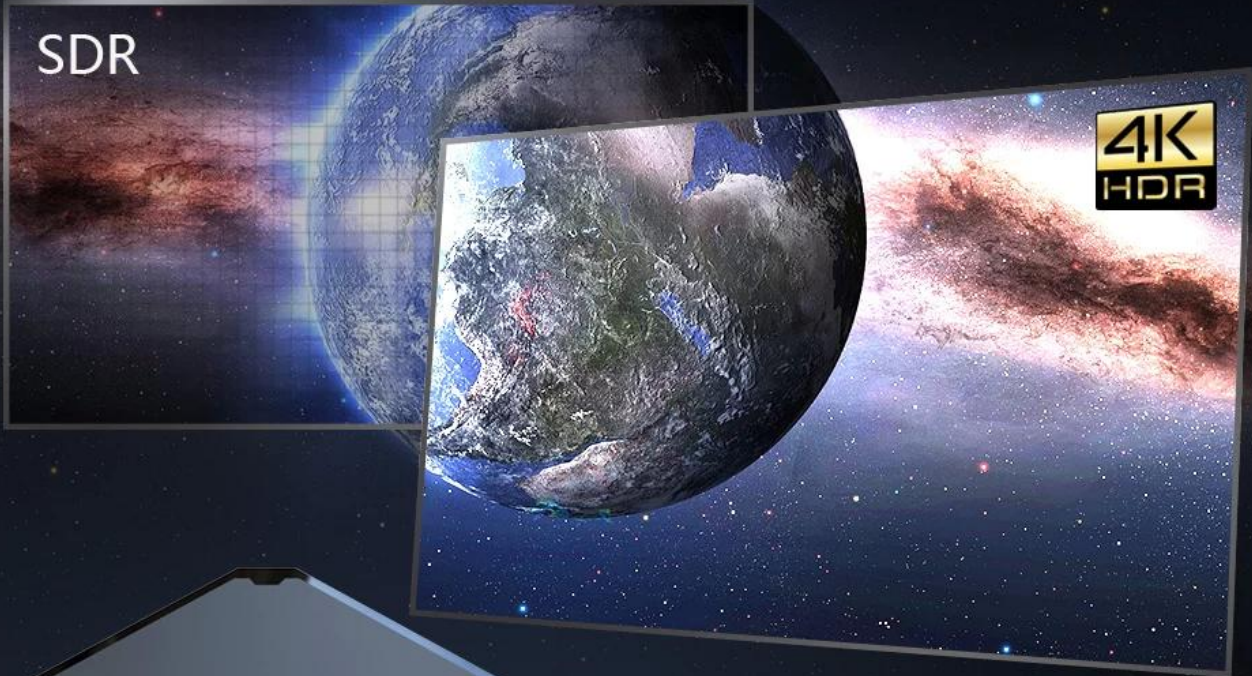
# Android 9.0

High quality output, Powerful graphics processor, Stable performance



# Support HDR

HDR offers a deeper, more life-like display, which boosts 4K and gives you even greater color and contrast.



**H.265**

HEVC

**4K**

Ultra HD

**HDR**

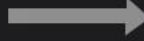
High Dynamic

# Fast color space conversion

Anti-aliasing engine with no additional bandwidth usage



Before HDR conversion



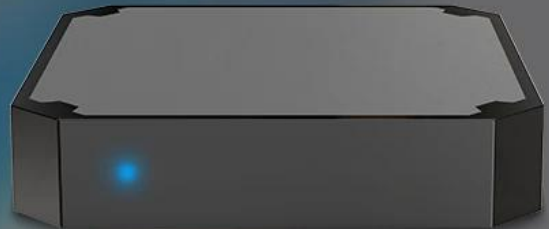
After HDR conversion



Before HDR conversion



After HDR conversion



# WiFi 2.4G&5G&802.11 ac

IEEE 802.11 a/b/g/n/ac compliant.

Support 20MHz,40MHz 80MHz bandwidth in 2.4GHz/5GHz band.Faster and more stable.







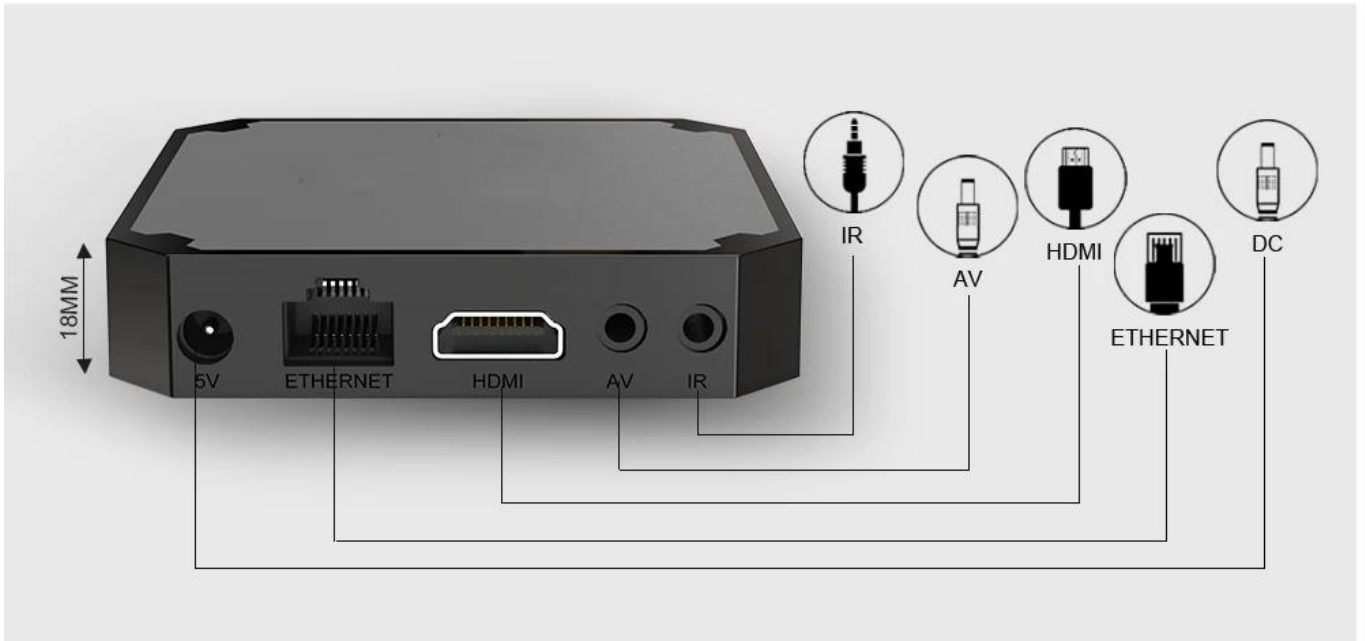
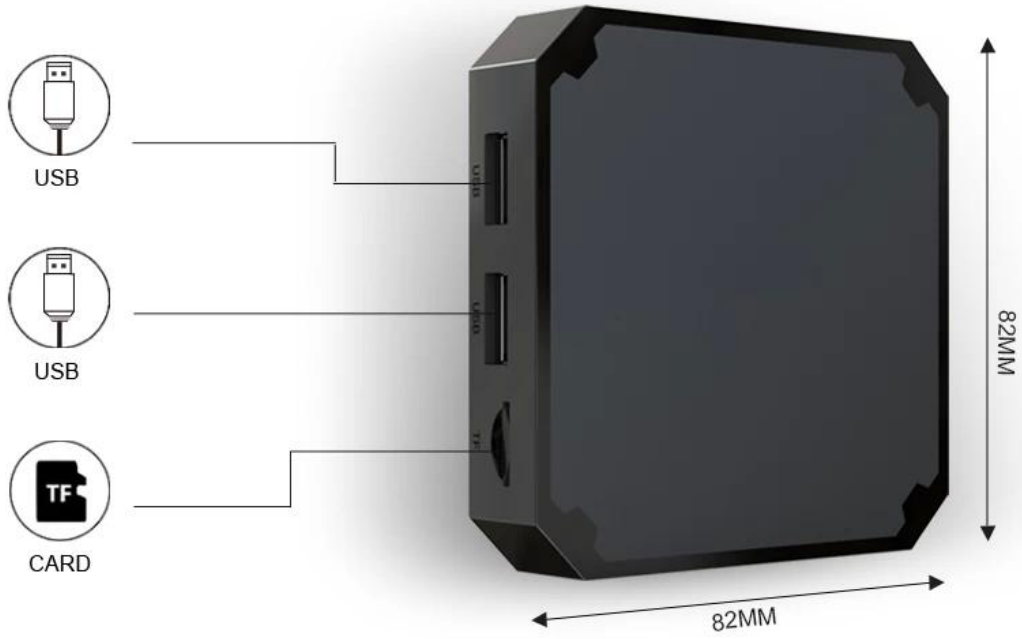
Working meeting



Leisure and entertainment



Family Fun Sharing



# Package Contents



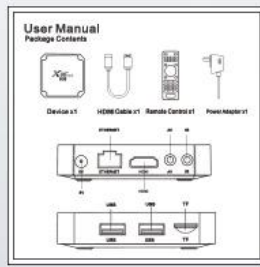
Power Adapter\*1



HDMI Cable\*1



Remote Control\*1



User Manual\*1



IR cable\*1 (optional)



Wall mount\*1 (optional)

Amlogic S905W4 TV Box

Amlogic S905W4 TV Box is a powerful and compact media player. It features a Quad-Core CPU Cortex-A53, GPU Mali-G31, and supports 4K Ultra HD video playback. The device is equipped with 2GB RAM and 16GB storage. It also offers WiFi Amlogic S905W4 SOC 5G Dual Band connectivity. The TV Box is designed for easy installation and use, making it a great choice for your home entertainment system.

Amlogic S905W4 TV Box

Amlogic S905W4 TV Box is a powerful and compact media player. It features a Quad-Core CPU Cortex-A53, GPU Mali-G31, and supports 4K Ultra HD video playback. The device is equipped with 2GB RAM and 16GB storage. It also offers WiFi Amlogic S905W4 SOC 5G Dual Band connectivity. The TV Box is designed for easy installation and use, making it a great choice for your home entertainment system.

Amlogic S905W4 TV Box

Amlogic S905W4 TV Box is a powerful and compact media player. It features a Quad-Core CPU Cortex-A53, GPU Mali-G31, and supports 4K Ultra HD video playback. The device is equipped with 2GB RAM and 16GB storage. It also offers WiFi Amlogic S905W4 SOC 5G Dual Band connectivity. The TV Box is designed for easy installation and use, making it a great choice for your home entertainment system.

Amlogic S905W4 TV Box

Amlogic S905W4 TV Box is a powerful and compact media player. It features a Quad-Core CPU Cortex-A53, GPU Mali-G31, and supports 4K Ultra HD video playback. The device is equipped with 2GB RAM and 16GB storage. It also offers WiFi Amlogic S905W4 SOC 5G Dual Band connectivity. The TV Box is designed for easy installation and use, making it a great choice for your home entertainment system.

