

# Android IPTV PoE (Power Over Ethernet) Android

Amlogic S905 Quad Core WiFi Device Smart Box  
Watch TV Channels Through Wifi or Internet



<b>DRM</b>	64-Bit Quad Core Cortex A53	H.265 @60fps	4K	HDMI 2.0 HDCP 2.2	TSMC 28NM
------------	-----------------------------	--------------	----	-------------------	-----------

Android G9C PoE (Power Over Ethernet)	
Processor	Amlogic S905 Quad Core ARM Cortex™-A53 CPU 2.0 GHz (DVFS)
GPU	Penta-Core Mali-450 750Mhz +
Storage	EMMC 8GB
SDRAM	1GB DDR3
Power Supply	
Power Input	DC 5V / 2A
LED	Power: Red; Status: Green
OS	
OS	Android™ 5.1 Lollipop
3D	3D-HD 1080Px2
Video Support	HD MPEG1 / 2/4, H.264/H.265, HD AVC / VC-1, RM / RMVB, Xvid / DivX3 / 4/5/6, RealVideo8 / 9/10, HEVC MP-10
Video Format	AVI / Rm / RmVb / Ts / VOB / Mkv / Mov / ISO / WMV / Asf / FLV / Dat / mpg / mpeg / MP4
Audio Support	MP3 / WMA / AAC / WAV / OGG / AC3 / DDP / TrueHD / DTS / DTS / HD / FLAC / APE
Image Support	HD JPEG / BMP / GIF / PNG / TIFF
USB	2 USB 2.0 U DISK / USB HDD
Storage	SD™ / SDHC / MMC
HDD	FAT16 / FAT32 / NTFS
Interface	SPI / SMI / SSA / IDX + USB
Display	SD / HD / 4K2K Ultra HD
OSD	On-Screen Display / Subtitle / Parental Control / Sleep / Auto Power Off
Network	1000M, RJ-45 (IEEE 802.3 10/100/1000)
Bluetooth	IEEE802.11 b / g / n Bluetooth™ 4.1EDR
WiFi	USB 2.4 GHz / 2.4GHz USB Dongle
HDMI™	HDMI™ 2.0 (CEC / HDCP 2.2), 4K X 2K @ 60 fps
AV	
IR	
PoE (Power Over Ethernet)	
SPDIF / IEC958	
IPTV / OTT	IPTV / OTT
App Support	
App Support	Miracast, Kodi, Airplay, Skype Chatting, Picasa, Youtube, Flicker, Facebook, etc.

### 規格:

Android TV Android TV PoE (Power Over Ethernet) Wi-Fi 2.4GHz, HD1080p PPPOE, DLNA Miracast, USB

### 規格?

- 1 \* Android TV PoE (Power Over Ethernet)
- 1 \* HDMI
- 1 \* 2.4GHz Wi-Fi
- 1 \* HD1080p
- 1 \* PPPOE, DLNA Miracast, USB



# Picture Show



Indicator Light Port





Micro SD Card

USB

USB



AV Port

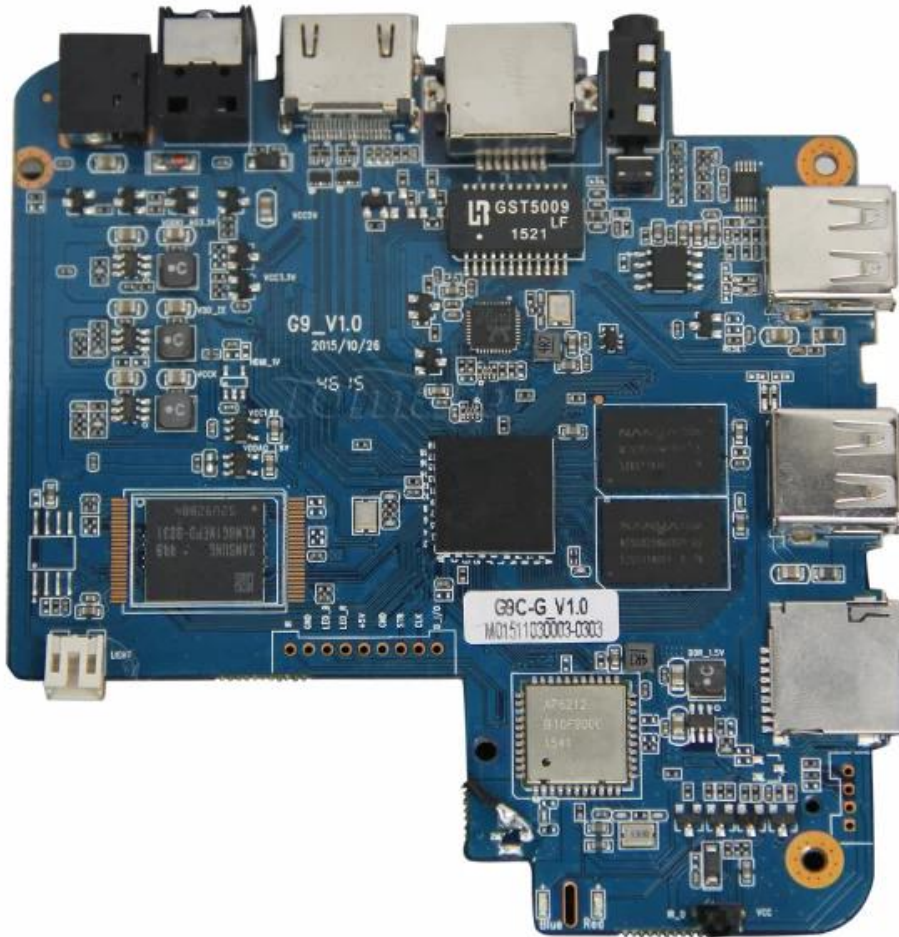
RJ 45 ETHERNET

HDMI™

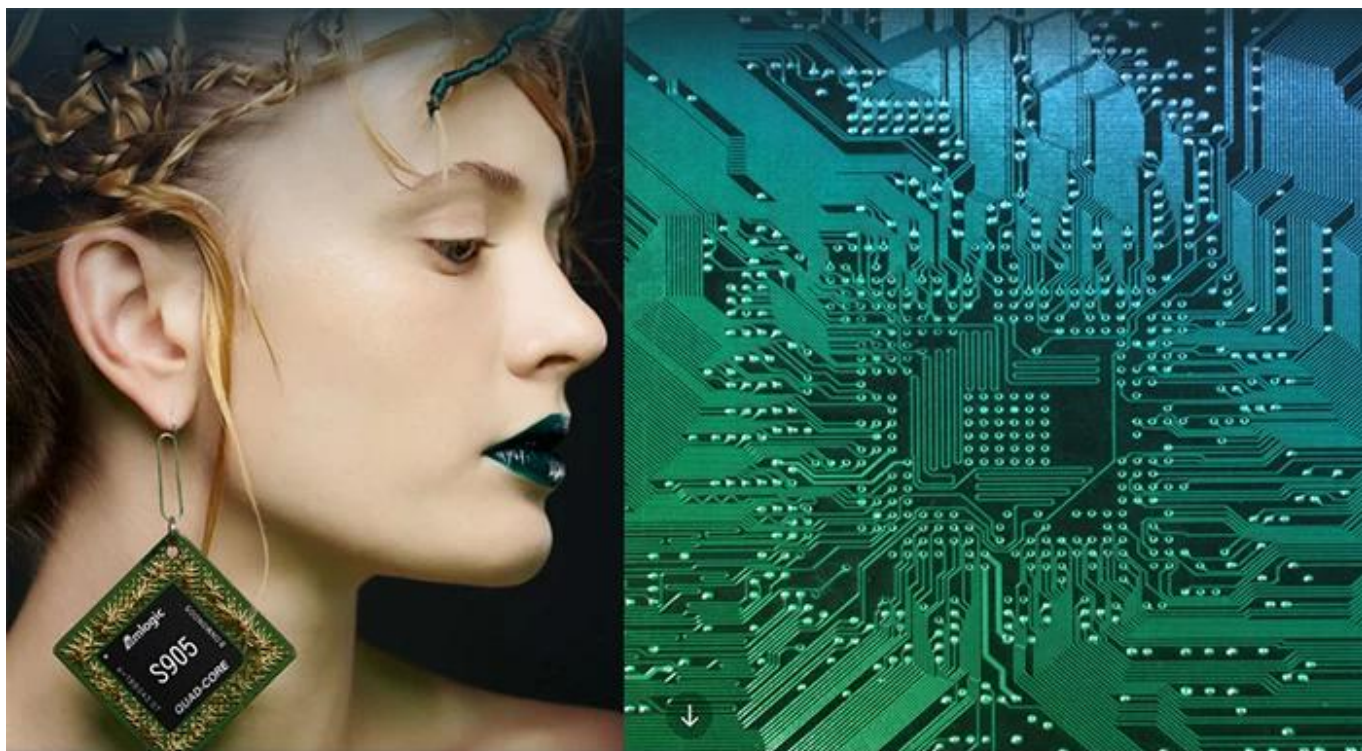
Optical Port

Power Port









# S905

64-Bit  
Quad Core  
Cortex A53

4K

H.265  
@60fps

HDMI 2.0  
HDCP 2.2

TSMC  
28NM

DRM



**64 bit CPU,**

While maintaining the same power consumption, the computing power of CPU has also been greatly improved.

With 4K2K decoding capabilities,  
it make 4K become the standard.



---

The color quantity is increase by 60 times more than the previous generation.



10 bit decoding, it could highest support 1.07 billion color, Compared to the previous generation of 16.7 million colors, it increase by 60 times.

---

The sound upgrade,  
while supporting Dolby Digital Plus and DTS.





3 + 2 core high-frequency GPU,  
it make the TV turn into the PlayStation.



The single core CPU frequency increase of 25%, 5-core computing speed can be achieved by the previous generation 8-core, it allowing you to experience smooth gaming.

Support 802.11ac WiFi protocol.

200 Mbps  
实际速率

120 Mbps  
上一代实际速率



Wireless projection the image&video  
of the phone/computer onto the TV.



Miracast



Airplay



DLNA



SMB  
共享协议



Intel@WIDI

---

Equipped with smart contiguous  
memory allocation technology,  
make the system running more smoothly.





Unforgettable visual  
experience.

1920 \* 1080 HD



Support 3D



1080P



Ultra Wide Vision

It's all about speeding up.



1G DDR3 dual channel memory and 8GB eMMC high speed flash memory.

The dual channel memory runs 1080p HD videos and large games flawlessly,  
while the eMMC high speed flash memory controls apps, games, and multi-media storage with ease.

Everything comes alive with 3D.



Experience home entertainment in 3D!



## S905

One of industry's first multimedia SoCs with 64-bit architecture, S905 is designed to deliver immersive theatre-level home entertainment to the users with excellent audio and video processing capabilities. It also supports operator-level security and is a perfect choice for OTT/IPTV/DVB STB, TV dongle and smart home applications.