

# Android 10.0

<b>Processor</b>	
Processor	Amlogic S922X
Core	Amlogic S922X Quad Core ARM Cortex A73 1.98Ghz
GPU	Dual Core ARM Cortex A53 1.98Ghz
GPU	ARM Mali-G52 MP4 (6EE) OpenGL ES 3.2, Vulkan 1.1 OpenCL 2.0
RAM	DDR4 2GB/4GB
Storage	eMMC 16GB (expandable up to 128GB)
OS	Android 9.0
<b>Display</b>	
Resolution	4K H265 10Bit, H.264, AVS, MPEG-2
Formats	MPEG1, MPEG2, MPEG4, H.264, WMV, MKV, TS, flv
Formats	MP3, JPEG, BMP, PNG, GIF
<b>Connectivity</b>	
Video	1 x LVDS 40 pins 2.0; 8 pins, 10 pins; HDMI 1; AV 1
Audio	x1, MIPI
Power	25W@2 pins 4 pins 2.5; 3W@2
Network	x1, 10M/100M WIFIBT, 2.4G single band, 2.4G/5G dual band
USB	USB OTG x1 (USB 2.0); USB 2.0
Storage	PCIE (4G) x1, M.2 (4G) x1
Other	x2, 6 pins 2.0; x1, 7 pins 2.0; LED; x4
TF	x1
Other	x1
<b>Power</b>	
Power	12V, 2.5DC

Android 10.0 is a major update to the Android operating system. It introduces several new features and improvements, including:

- Enhanced security with scoped storage and improved app sandboxing.
- New privacy controls for location, camera, and microphone access.
- Improved performance and battery life through better system optimization.
- New features for developers, such as scoped storage and improved app sandboxing.

The Amlogic S922X processor is a powerful 4-core ARM Cortex-A73/A53 SoC. It features:

- 4x ARM Cortex-A73 cores (up to 1.98 GHz) and 4x ARM Cortex-A53 cores (up to 1.98 GHz).
- ARM Mali-G52 MP4 GPU with Vulkan 1.1 and OpenCL 2.0 support.
- Support for 4K video playback and recording.
- Support for HDR content.
- Support for dual-band Wi-Fi and Bluetooth.
- Support for USB OTG and USB 2.0.
- Support for PCIE and M.2 storage.

Codec: MVC, MPEG-1/2/4, vc-1 /WMV, AVS, AVS , avs2 realvideo, MJPEG, H.264, h265-10, VP9 JPEG h.265/h.264 1080p, 75 4kx2k @ 60fp (3840 \* 2160) hdmi2.2 4K V HDCP 2.2, DAC, CVBS, Mipi DSI 4 I/O TDM, PCM, I2S SPDIF PDM (dmic) 8 DVP 2x2 WiFi (2.4G 5.8G) 4.1 Gigabit Ethernet

o Amlogic ARM® Cortex™ A73 64 ARM® Cortex™ A53

GPU ARM Mali-G52 MP4

o HW UHD 4K.H.265 75fps 10 1080p H.265/H.264 60fp sencoder

o Dolby Vision HDR10, HDR10, HLG PRIME HDR

o Cortex-M4 core

o TrustZone DRM

o WIFI, BT, USB, SD,

o

Amlogic S922X Android OTT/IPTV Set Top Box (STB) CPU GPU, CODEC 4K HDR AP

CPU Big Quad-Core Cortex-A53 Dual-Core L2 CPU core NEON SIMD

GPU ARM Mali-G52 MP4 OpenGL ES 3.2 Vulkan 1.0 OpenCL 2.0 2.5D HDR10, HDR10, HLG PRIME HDR Dolby Vision, REC709/BT2020,

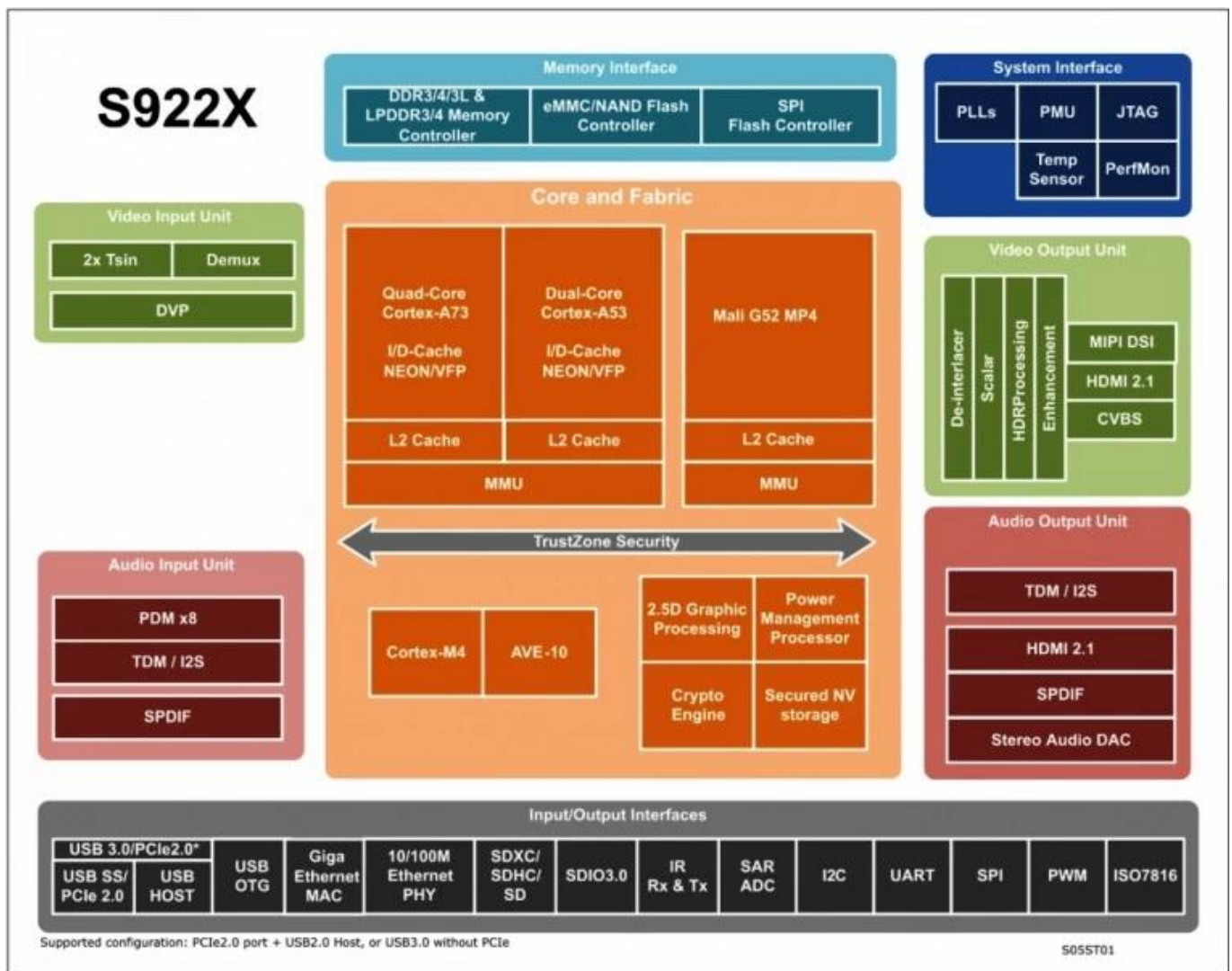
Amlogic Video Engine (AVE-10) Cortex-A53 CODEC

4Kx2K 75fps Trusted Video Path (TVP)  
 MVC, MPEG- 1/2/4, VC-1/WMV, AVS, AVS, AVS2 RealVideo, MJPEG, H.264, H265-10, VP9, JPEG  
 JPEG H.265/H.264 1080p 60fps

Amlogic S922X /  
 HDMI2.1 3D, Dynamic HDR, CEC, HDCP 2.2, DAC, CVBS, 4 MIPI DSI, TDM, PCM, I2S, SPDIF, PDM (DMIC) 8 DVP

Amlogic S922X demuxcan

10/100/1000M Ethernet MAC, RGMII, 10/100M Ethernet PHY, USB XHCI OTG 2.0, USB3.0, PCIe



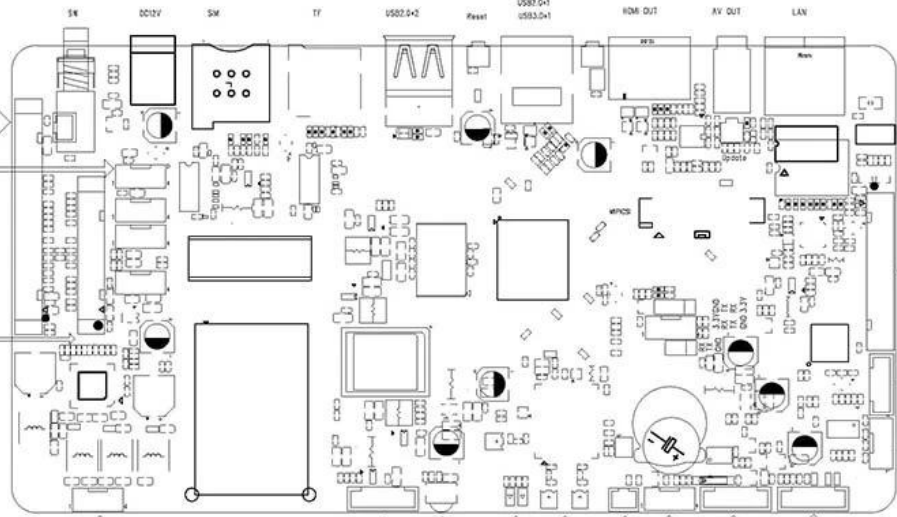


180mm

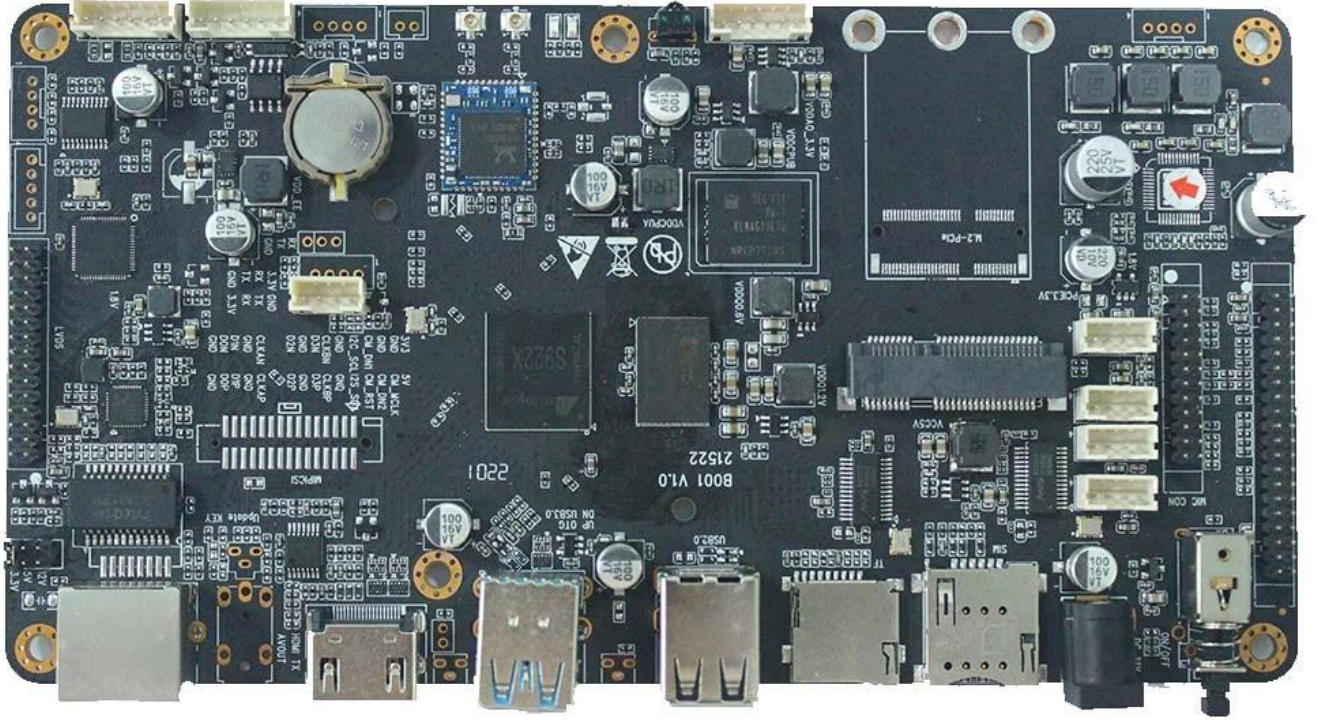
95mm

180mm\*95mm\*20mm

21259-10-1472027



LV95





- 支援 AV 1 規格
- 1 通道 I2C
- I2SC/IS2B
- 最大消費電力 25W 1 通道、最大消費電力 3W
- (2) 支援 4Kx2K@60fps 1080P@60fps
- 支援 WiFi 規格 4G 規格
- (3) 支援 4Kx2K@60fps 1080P@60fps
- 支援 4Kx2K@60fps 1080P@60fps
- 支援 U 規格
- 支援 4Kx2K@60fps 1080P@60fps

規格

規格

- (1) Quad Core ARM Cortex-A73 / Dual Core ARM Cortex-A53
- (2) ARMv8-A / Neon / Crypto
- (3) L2
- (4) Build-in Cortex-M4 core
- (5) TrustZone
- (6) QoS

規格

- (1) GPU ARM Mali-G52 MP4 (4ppc)
- (2) 8, 2x2, 6x8 (EE)
- (3)
- (4) OpenGL ES3.2, Vulkan 1.0 / OpenCL 2.0

CODEC 規格

- (1) Amlogic Video Engine (AVE)
- (2) 4Kx2K@60fps 1x1080P@60fps
- (3) "AV1" / "VP9" / "H.265" / "H.264" / "AVC" / "MVC" / "MPEG-4" / "WMV" / "AVS" / "MPEG-2" / "MPEG-1" / "RealVideo" / "JPEG" / "MJPEG" / "JPG" / "H.265/H.264" / "JPEG" / "H.265/H.264"
- (4) VP9-2 4Kx2K@60fps  
H.265 HEVCMP-10@L5.1 4Kx2K@60fps  
AVS2-P2 4Kx2K@60fps  
H.264 AVCHP@L5.1 4Kx2K@30fps  
H.264 MVC 1080P@60fps  
MPEG-4 ASP@L5 1080P@60fps (ISO-14496)  
WMV/VC-1 SP/MP/AP 1080P@60fps  
AVS-P16(AVS) /AVS-P2 JiZhun 1080P@60fps  
MPEG-2 MP/HL 1080P@60fps(ISO-13818)  
MPEG-1MP/HLupto1080P@60fps(ISO-11172)  
RealVideo 8/9/10 1080P@60fps  
MJPEG 規格 JPEG 規格 (ISO/IEC-10918)  
規格 \* .mkv, \*.wmv, \*.mpg, \*.mpeg, \*.dat, \*.avi, \*.mov, \*.iso, \*.mp4, \*.rm 規格 \*.jpg
- (5) H.265/H.264 規格 1080P@60fps

規格

- (1) HDMI 2.1 規格 PHY 規格 CEC, Dynamic HDR 規格 HDCP 2.2, 4Kx2K@60
- (2) CVBS 480i/576i



- (3) 支援 SD/HD/FHD 解析度: 480i/p, 576i/p, 720p, 1080i/p 4Kx2K
- (4) MIPI DSI 4 1920 \* 1080

支援規格

處理器

- (7) Quad Core ARM Cortex-A73 Dual Core ARM Cortex-A53
- (8) ARMv8-A Neon Crypto
- (9) L2
- (10) Cortex-M4
- (11) TrustZone
- (12) QoS

顯示器

- (5) GPU ARM Mali-G52 MP4 (4ppc)
- (6) 8, 2xdual, 6x8 (EE)
- (7)
- (8) OpenGL ES3.2, Vulkan 1.0 OpenCL 2.0

CODEC 支援規格

- (6) Amlogic Video Engine (AVE)
- (7) 4Kx2K@60fps1x1080P@60fps
- (8) "H.265" 支援規格
- (9) VP9-2 4Kx2K@60fps  
H.265 HEVCMP-10@L5.1 4Kx2K@60fps  
AVS2-P2 4Kx2K@60fps  
H.264 AVCHP@L5.1 4Kx2K@30fps  
H.264 MVC 1080P@60fps  
MPEG-4 ASP@L5 1080P@60fps (ISO-14496)  
WMV/VC-1 SP/MP/AP 1080P@60fps  
AVS-P16(AVS) /AVS-P2 JiZhun 1080P@60fps  
MPEG-2 MP/HL 1080P@60fps(ISO-13818)  
MPEG-1MP/HLupto1080P@60fps(ISO-11172)  
RealVideo 8/9/10 1080P@60fps  
MJPEG 支援 JPEG (ISO/IEC-10918)  
\*.mkv,\*.wmv,\*.mpg, \*.mpeg, \*.dat, \*.avi,\*.mov, \*.iso,\*.mp4, \*.rm \*.jpg  
(10) H.265/H.264 1080P@60fps  
JPEG H.265/H.264 1080P@60fps

音訊

- (5) HDMI 2.1 PHY CEC, Dynamic HDR HDCP 2.2, 4Kx2K@60
- (6) CVBS 480i/576i
- (7) SD/HD/FHD 解析度: 480i/p, 576i/p, 720p, 1080i/p 4Kx2K
- (8) MIPI DSI 4 1920\*1080

Amlogic S922X Android Smart TV Box 支援規格

支援規格. 支援規格 4K