

Android TV 4K

Android TV 4K - 4K H.265 10Bit, H.264, AVS, MPEG-2

Android TV 4K	
Android TV 4K	Android Amlogic S922X
Processor	Amlogic S922X Quad Core ARM Cortex A73 Dual Core ARM Cortex A53 1.98Ghz
GPU	ARM Mali-G52 MP4 (6EE) OpenGL ES 3.2, Vulkan 1.1 OpenCL 2.0
RAM	DDR4 2GB/4GB
Storage	eMMC 16GB (expandable up to 128GB)
OS	Android 9.0
Video	
Video Output	4K H.265 10Bit, H.264, AVS, MPEG-2
Video Input	MPEG1, MPEG2, MPEG4, H.264, WMV, MKV, TS, flv
Audio	MP3, AAC, DTS, Dolby Digital, Dolby Digital Plus, Dolby Atmos
Connectivity	
Video Output	1 x LVDS 40 pins 2.0, 8 pins, 10 pins; HDMI 1; AV 1
Video Input	x1, MIPI
Power	25W@2 pins 4 pins 2.5 pins. 3W@2
Network	x1, 10M/100M WIFIBT, 2.4G single band 2.4G/5G dual band
Storage	PCIE (4G) x1 M.2 (4G) x1
USB	USB OTG x1 (USB 2.0)
Audio	x2, 6 pins 2.0 pins
Light	x1, 7 pins 2.0 pins. LED
Buttons	x4
TF	x1
Other	x1
Power	
Power Input	12V, 2.5DC

Android TV 4K is a powerful media player that supports 4K H.265 10-bit video. It features a quad-core ARM Cortex A73 processor and a Mali-G52 MP4 GPU. The device is equipped with 2GB of DDR4 RAM and 16GB of eMMC storage, which can be expanded up to 128GB. It runs on Android 9.0 and offers a wide range of connectivity options, including HDMI, AV, USB OTG, and various network interfaces. The power input is 12V, 2.5DC.

AI-powered features are available on the Android TV 4K, including voice search and recommendations. The device is powered by the Amlogic S922X processor, which includes a dual-core ARM Cortex A53 and a dual-core ARM Cortex A73. It also features a Mali-G52 MP4 GPU and 2GB of DDR4 RAM. The device is compatible with 4K video and HDR content. It supports various video formats, including H.265, H.264, AVS, and MPEG-2. The device is also compatible with various audio formats, including AAC, DTS, and Dolby Digital. It features a variety of connectivity options, including HDMI, AV, USB OTG, and various network interfaces. The power input is 12V, 2.5DC.

Codec: MVC, MPEG-1/2/4, vc-1 /WMV, AVS, AVS , avs2 realvideo, MJPEG, H.264, h265-10, VP9 JPEG h.265/h.264 1080p, 75 4Kx2k @ 60fp (3840 * 2160) hdmi2.2 4K V HDCP 2.2, DAC, CVBS, Mipi DSI 4 I/O TDM, PCM, I2S SPDIF PDM (dmic) 8 DVP 2x2 WiFi (2.4G 5.8G) 4.1 Gigabit Ethernet

o Amlogic ARM® Cortex™ A73 64 ARM® Cortex™ A53

GPU ARM Mali-G52 MP4

o HW UHD 4K.265 75fps 10 1080p H.265/H.264 60fp sencoder

o Dolby Vision HDR10, HDR10, HLG PRIME HDR

o Cortex-M4 core

o TrustZone DRM

o WIFI, BT, USB, SD,

o

Amlogic S922X Android OTT/IPTV Set Top Box (STB) CPU GPU, CODEC 4K HDR AP

CPU Big Quad-Core Cortex-A53 Dual-Core L2 CPU core NEON SIMD

GPU ARM Mali-G52 MP4 OpenGL ES 3.2 Vulkan 1.0 OpenCL 2.0 2.5D HDR10, HDR10, HLG PRIME HDR Dolby Vision, REC709/BT2020,

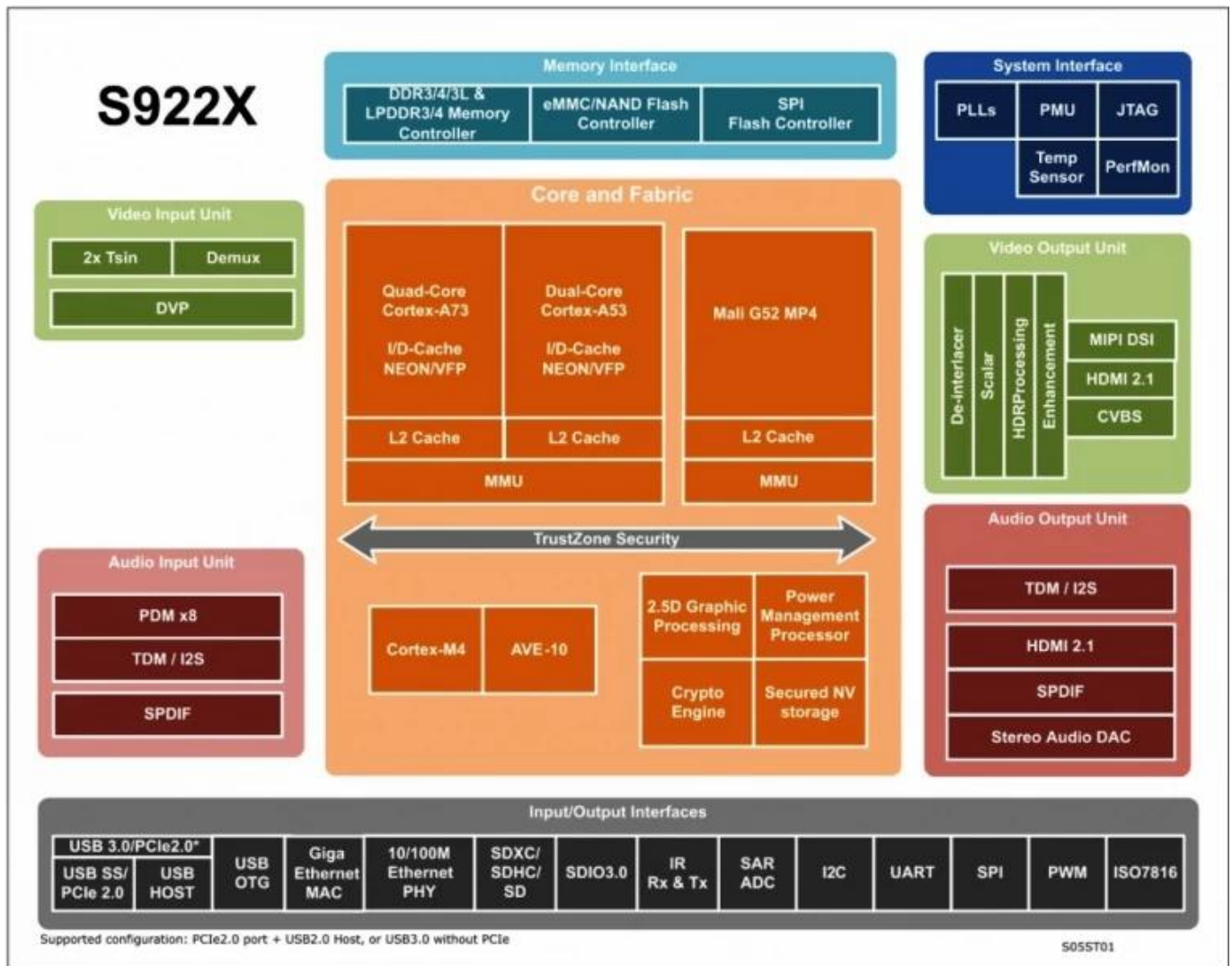
Amlogic Video Engine (AVE-10) Cortex-A53 CODEC

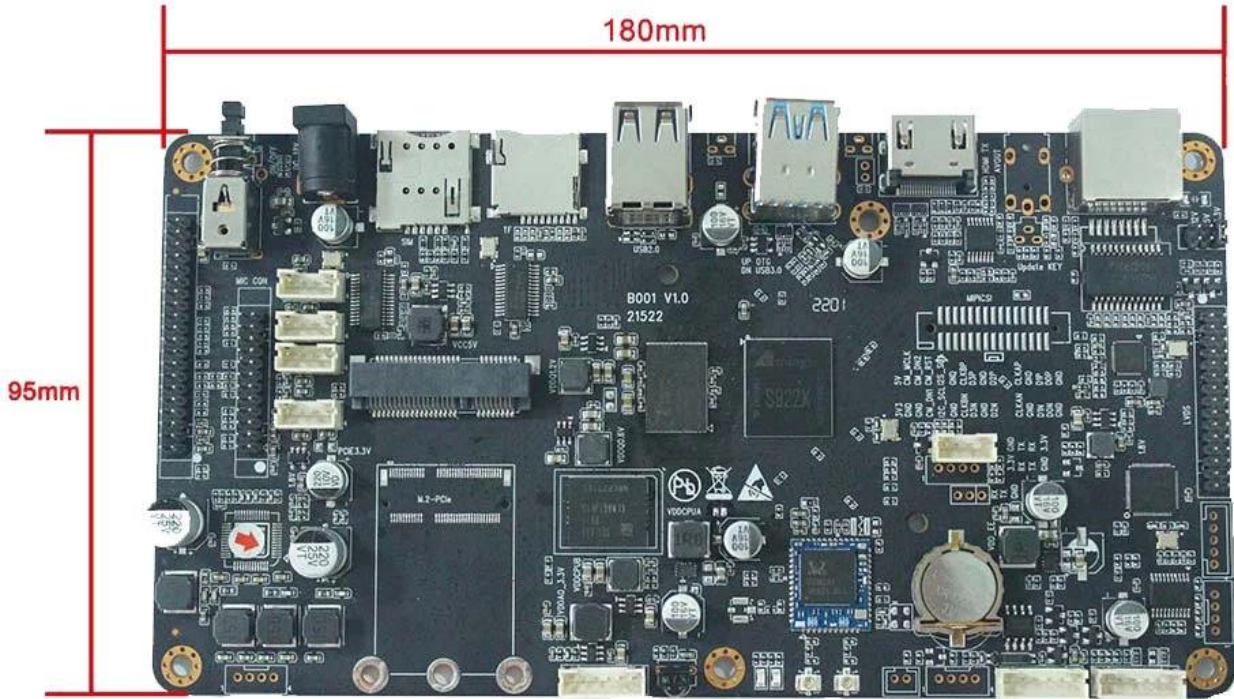
4Kx2K 75fps Trusted Video Path (TVP)
 MVC, MPEG- 1/2/4, VC-1/WMV, AVS, AVS, AVS2 RealVideo, MJPEG, H.264, H265-10, VP9, JPEG
 JPEG H.265/H.264 1080p 60fps

Amlogic S922X /
 HDMI2.1 3D, Dynamic HDR, CEC, HDCP 2.2, DAC, CVBS, 4 MIPI DSI, TDM, PCM, I2S, SPDIF, PDM (DMIC) 8 DVP

Amlogic S922X demuxcan

10/100/1000M Ethernet MAC, RGMII, 10/100M Ethernet PHY, USB XHCI OTG 2.0, USB3.0, PCIe

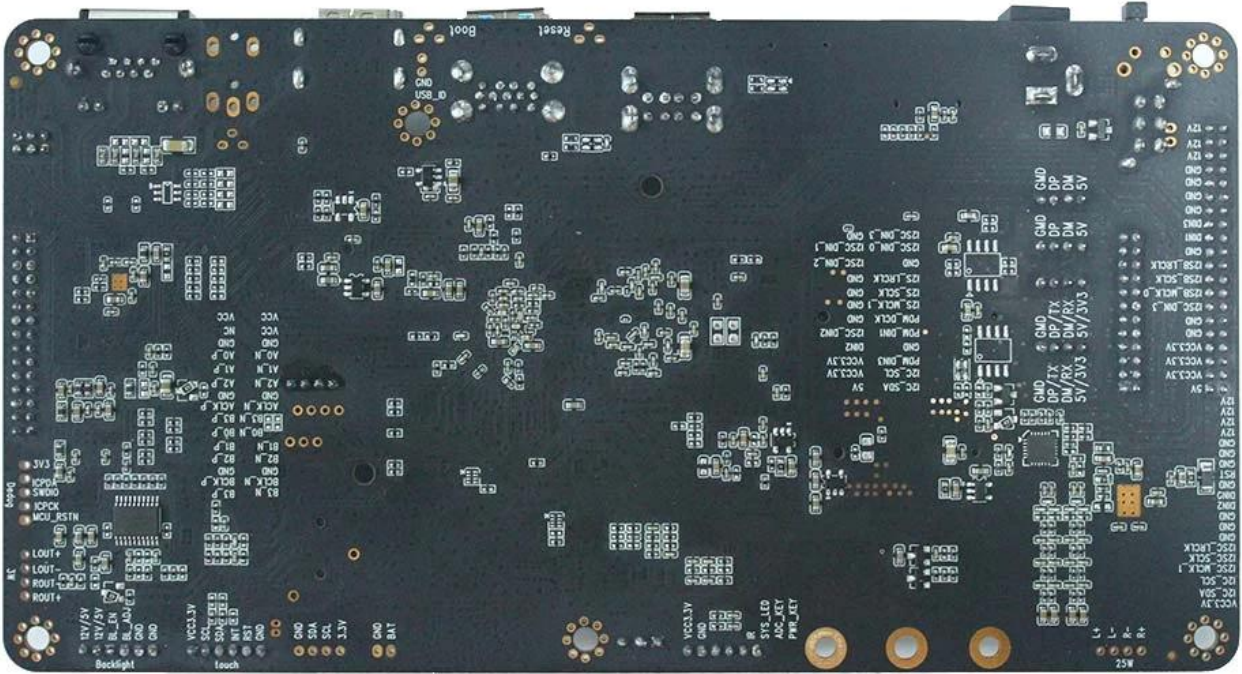




180mm

95mm

180mm*95mm*20mm



Amlogic S922X Android Development Board

Amlogic S922X 12nm 12nm UHD 4K @ 60fps H.265 10 bit, H.264 AVS HDR10 HLG UART USB Bluetooth, WIFI, 4G AV, SD 3 AI

- (1)
 - LVDS 1 (40)
 - HDMI 1
 - USB2.0 5
 - 4 RS232 (USB2.0)
 - MIPI CSI 1
 - AV 1

- 1 通道 I2C
- I2SC/IS2B
- 功耗 25W 1 通道 3W
- (2) 功耗 3W
- WiFi 4G
- (3) 功耗 3W
- U

通道 I2C

功耗

- (1) Quad Core ARM Cortex-A73 Dual Core ARM Cortex-A53
- (2) ARMv8-A Neon Crypto
- (3) L2
- (4) Build-in Cortex-M4 core
- (5) TrustZone
- (6) QoS

通道 3

- (1) GPU ARM Mali-G52 MP4 (4ppc)
- (2) 8, 2xdual, 6x8 (EE)
- (3) OpenGL ES3.2, Vulkan 1.0 OpenCL 2.0

CODEC 通道/通道

- (1) Amlogic Video Engine (AVE)
- (2) 4Kx2K@60fps 1x1080P@60fps
- (3) "通道"
- (4) VP9-2 4Kx2K@60fps
- H.265 HEVCMP-10@L5.1 4Kx2K@60fps
- AVS2-P2 4Kx2K@60fps
- H.264 AVCHP@L5.1 4Kx2K@30fps
- H.264 MVC 1080P@60fps
- MPEG-4 ASP@L5 1080P@60fps (ISO-14496)
- WMV/VC-1 SP/MP/AP 1080P@60fps
- AVS-P16(AVS) /AVS-P2 JiZhun 1080P@60fps
- MPEG-2 MP/HL 1080P@60fps(ISO-13818)
- MPEG-1MP/HLupto1080P@60fps(ISO-11172)
- RealVideo 8/9/10 1080P@60fps
- MJPEG 通道 JPEG (ISO/IEC-10918)
- 通道 JPEG *.mkv, *.wmv, *.mpg, *.mpeg, *.dat, *.avi, *.mov, *.iso, *.mp4, *.rm *.jpg
- (5) 通道 JPEG 通道 H.265/H.264 通道 JPEG 通道 H.265/H.264 1080P@60fps

通道

- (1) HDMI 2.1 PHY CEC, Dynamic HDR HDCP 2.2, 4Kx2K@60
- (2) CVBS 480i/576i

4K [Android TV Box](#)

Android TV Box

Android TV Box

4K Android TV Box

Android TV Box

4K Android TV Box

Android TV Box

Android TV Box