

Amlogic 905W AndroidTV

| | |
|-------------------------------|--|
| <p>Amlogic 905W AndroidTV</p> | |
| Processor | Amlogic S905W ARM Cortex-A53 2GHz(DVFS) |
| GPU | Penta-Core Mali-450 750Mhz |
| RAM | 2GB DDR3 |
| Storage | 16GB |
| Resolution | 4K(3840 X 2160) 60Hz |
| OS | Android 7.1 Android TV (ATV) |
| <p>Supported Formats</p> | |
| Video | VP9-10/H.265-10/MVC/MPEG-1/2/4 VC-1/WMV/AVS/AVS/RealVideo/MJPEG/H.264/JPEG |
| Audio | Avi/Rm/Rmvp/Ts/Vob/Mkv/Mov/ISO/wmv/asf/flv/dat/mpg/mpeg |
| Image | MP3/WMA/AAC/WAV/OGG/AC3/DDP/TrueHD/DTS/DTS/HD/FLAC |
| Image | HD JPEG/BMP/GIF/PNG/TIFF |
| OSD | OSD / OSD / OSD / OSD / OSD / OSD |
| <p>Ports</p> | |
| USB | 2 * USB 2.0 |
| TF | TF |
| HDMI | HDMI2.0 |
| LAN | LAN: 10 / 100M, RJ-45 |
| WiFi | WiFi (802.11b/g/n) 2.4G/5G, BT4.0; WiFi 2.4G |
| Bluetooth | Bluetooth 4.2 |
| Speaker | 3Speaker/4Ω x1 |
| Microphone | MEMS x1, -26dBFS |
| <p>Power</p> | |
| Power | 5V/2A |
| Connectivity | USB, BT, HDMI |
| USB | USB BT 2.4GHz USB 2.4GHz |



Built-in
2W speaker



Far-field
voice control



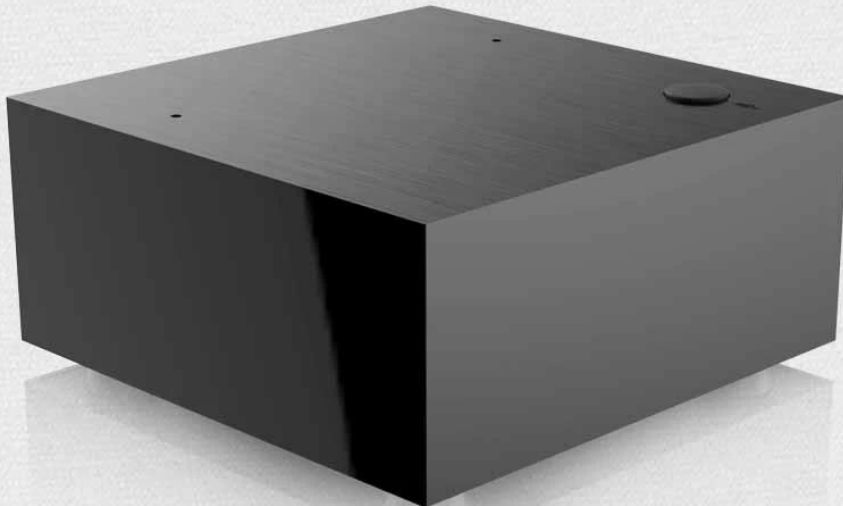
Built-in
microphone



Powered by
androidtv

ALL IN ONE

OTT TV BOX + Ai speaker + Ai assistant



It's a TV box

When the TV screen is on, it is a TV box
you can do everything you do on the TV box



Amlogic Quad-Core 64-bit CPU

Higher performance, faster response times, lower power



4K x 2K Display

4K x 2K H.264/H.265 super HD video playback



Powered by androidtv

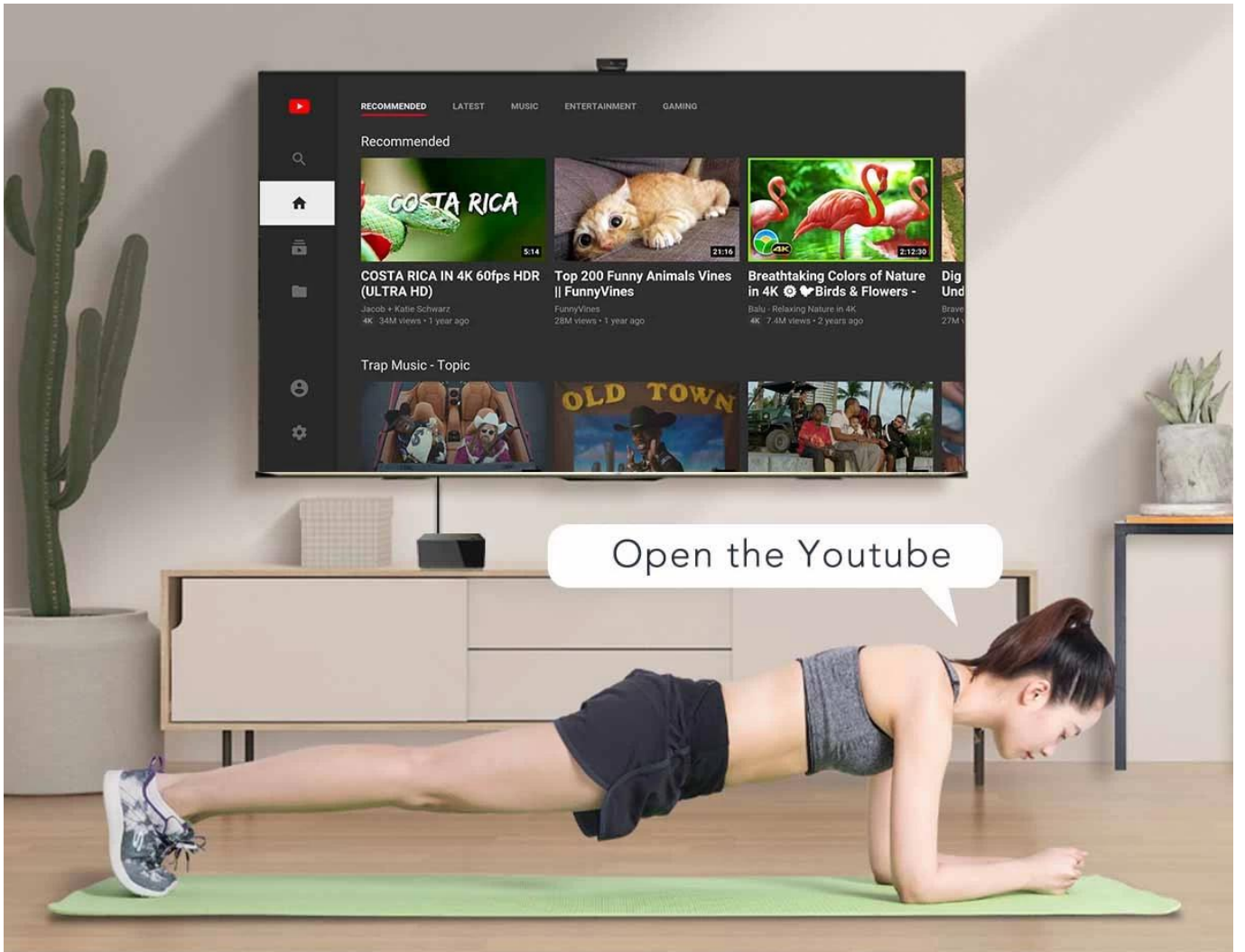
More simple user interface makes a difference



Far-field Voice Control

Digital microphone, 3-5 meters far field voice collection





**Use your voice to control
your entertainment**

It's an Ai speaker

When the TV screen is off, it turns into an Ai speaker.
Now you just have to say what you want to do.

What's the weather today?

Tell me the latest news today

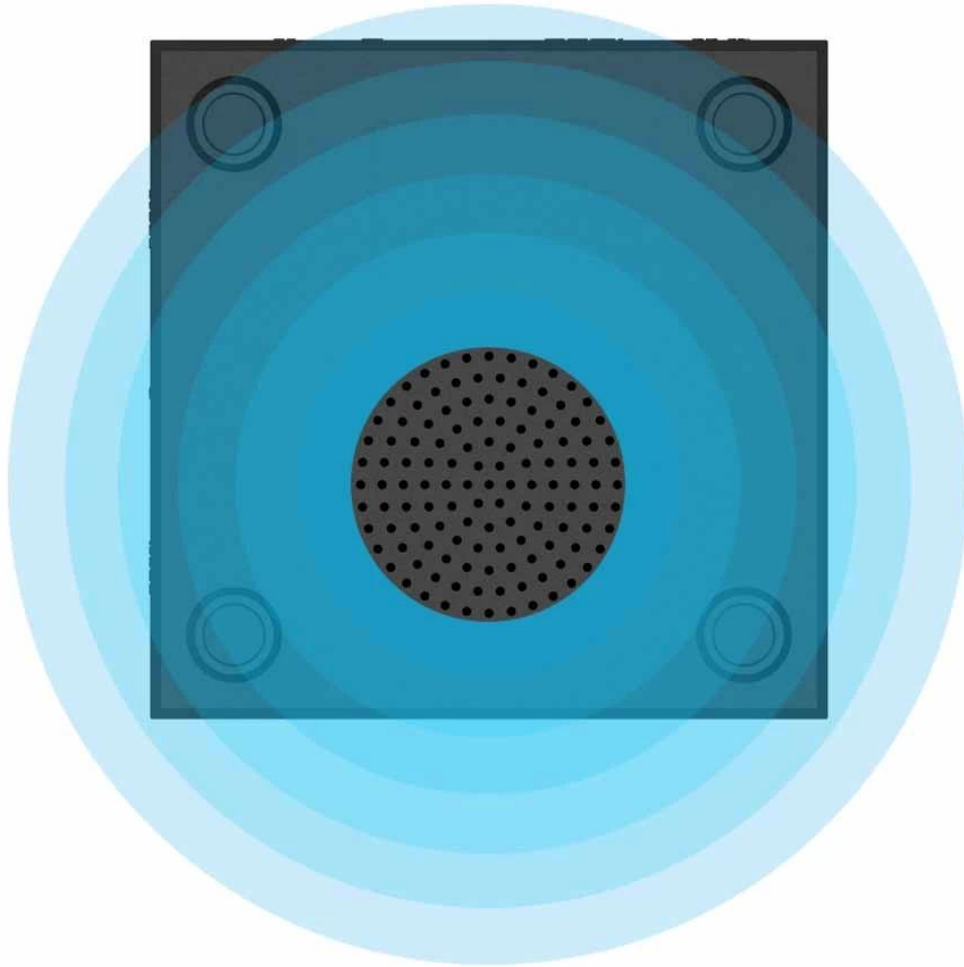
Play the latest popular songs

Set a timer for 10 minutes



Built-in 2W speaker

You can use it as an Ai speaker



Built-in Microphone

Voice control your smart devices



How to get started



1 Connect the box and TV via HDMI cable

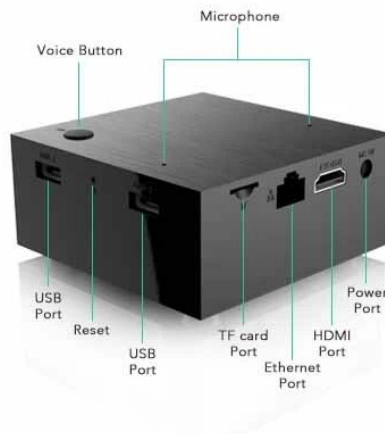


2 Plug on the power adaptor to turn on the box



3 Follow the Setup Wizard to set up your box

What's in the box



OTT TV Box Amlogic S905W AndroidTV