

POE Android

<p>Amlogic A311D POE Android</p>	
<p>Amlogic A311D Quad Core ARM Cortex A73 Dual Core ARM Cortex A53 1.98Ghz</p>	<p>ARM Mali-G52 MP4 (6EE) OpenGL ES 3.2, OpenCL 1.1</p>
<p>DDR4 2GB/4GB</p>	<p>eMMC 16GB (128GB)</p>
<p>Android 9.0</p>	
<p>4K H265 10Bit, H.264, AVS, MPEG-2</p>	
<p>MPEG1, MPEG2, MPEG4, H.264, WMV, MKV, TS, flv MP3 JPG, JPEG, BMP, PNG, GIF</p>	
<p>1 LVDS 40 2.0. HDMI 1 AV 1</p>	
<p>x1, MIPI 25W@2 4 2.5. 3W@2</p>	
<p>x1, 10M/100M WIFIBT, 2.4G single band 2.4G/5G dual band PCIE (4G) x1 M.2 (4G) x1</p>	
<p>USB2.0</p>	<p>USB OTG x1 (x7)</p>
<p>x2, 6 2.0 x1, 7 2.0. LED x4</p>	
<p>TF x1</p>	
<p>x1</p>	
<p>12V, 2.5DC</p>	

S922X



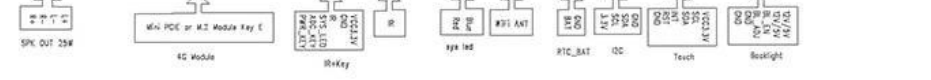
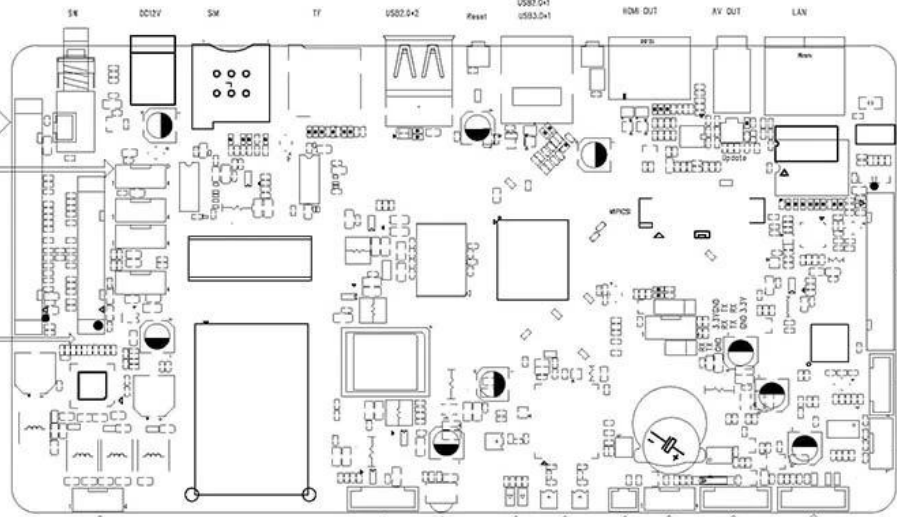
Supported configuration: PCIe2.0 port + USB2.0 Host, or USB3.0 without PCIe

S055T01

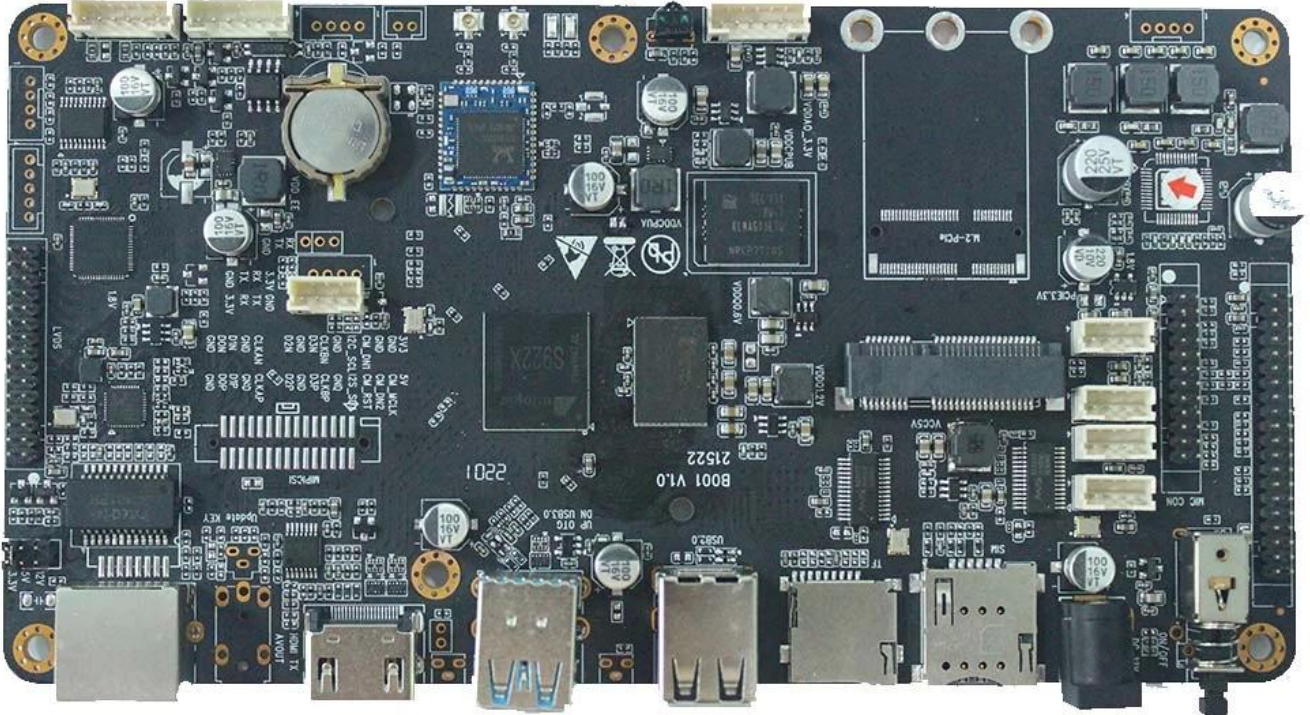


180mm*95mm*20mm

21258 10 1472027



LV95



Amlogic A311D Android Development Board - LCD
 Amlogic A311D 12nm UHD 4K @ 60fps
 H.265 10, H.264 AVS
 HDR10 HLG
 UART USB Bluetooth, WIFI, 4G
 AV, SD
 3
 AI

- (1)
- LVDS 1 (40)
 - HDMI 1
 - USB2.0 5
 - 4 RS232 (USB2.0)
 - MIPI CSI 1
 - AV 1
 - 1 I2C

- I2SC/IS2B

- 25W 1 3W

(2)

- WiFi 4G

(3)

-

-

- U

-

(1) Quad Core ARM Cortex-A73 Dual Core ARM Cortex-A53

(2) ARMv8-A Neon Crypto

(3) L2

(4) Build-in Cortex-M4 core

(5) TrustZone

(6) QoS

(1) GPU ARM Mali-G52 MP4 (4ppc)

(2) 8, 2x2, 6x8 (EE)

(3)

(4) OpenGL ES3.2, Vulkan 1.0 OpenCL 2.0

CODEC

(1) Amlogic Video Engine (AVE)

(2) 4Kx2K@60fps1x1080P@60fps

(3) "H.265" H.264

(4)

VP9-2 4Kx2K@60fps

H.265 HEVCMP-10@L5.1 4Kx2K@60fps

AVS2-P2 4Kx2K@60fps

H.264 AVCHP@L5.1 4Kx2K@30fps

H.264 MVC 1080P@60fps

MPEG-4 ASP@L5 1080P@60fps (ISO-14496)

WMV/VC-1 SP/MP/AP 1080P@60fps

AVS-P16(AVS) /AVS-P2 JiZhun 1080P@60fps

MPEG-2 MP/HL 1080P@60fps(ISO-13818)

MPEG-1MP/HLupto1080P@60fps(ISO-11172)

RealVideo 8/9/10 1080P@60fps

MJPEG JPEG (ISO/IEC-10918)

JPEG

.mkv,.wmv,*.mpg, *.mpeg, *.dat, *.avi,*.mov, *.iso,*.mp4, *.rm *.jpg

(5)

JPEG H.265/H.264

JPEG

H.265/H.264 1080P@60fps

(1) HDMI 2.1 PHY CEC, Dynamic HDR HDCP 2.2,

4Kx2K@60

(2) CVBS 480i/576i

(3) SD/HD/FHD: 480i/p, 576i/p, 720p, 1080i/p 4Kx2K

(4) MIPI DSI 4 1920 * 1080

POE Android 4K

Android Google Play Store

Android POE 4K

USB

Android POE HDMI, USB, Wi-Fi

POE Android 4K