

Android TV

Android TV

Amlogic S905 Quad Core WiFi Device Smart Box
Watch TV Channels Through Wifi or Internet



- DRM
- 64-Bit Quad Core Cortex A53
- H.265 @60fps
- 4K
- HDMI 2.0 HDCP 2.2
- TSMC 28NM

Android TV G9C	
Processor	Amlogic S905 ARM Cortex™ -A53 CPU 2.0 GHz (DVFS)
GPU	Penta-Core Mali-450 750Mhz
RAM	1GB DDR3
Power Supply	
Power Input	5V/2A
LED	Red: Power; Blue: Standby
OS & Features	
OS	Android™ 5.1
Resolution	3D-HD 1080Px2
Video Support	HD MPEG1/2/4, H.264 /H.265, HD VC-1, RM/RMVB, Xvid/DivX3/4/5/6, RealVideo8/9/10, HEVC MP-10
Audio Support	Avi/Rm/Rmvb/Ts/Vob/Mkv/Mov/ISO/Wmv/Asf/Flv/Dat/Mpg/Mpeg/ MP4
Subtitle Support	MP3/WMA/AAC/WAV/OGG/AC3/DDP/TrueHD/DTS/DTS/HD/FLAC
Image Support	HD JPEG/BMP/GIF/PNG/TIFF
USB	2 USB 2.0 U Disk USB HDD
Storage	SD™ /SDHC/MMC
HDD	FAT16/FAT32/NTFS
Connectivity	WiFi/SM/SSA/IDXUSB
OSD	SD / HD / 4K2K Ultra HD
Network	1000M, RJ-45 (IEEE 802.3 10/100/1000 Gigabit)
Bluetooth	IEEE802.11 b/g/n Bluetooth™ 4.1EDR
USB 2.4GHz	USB 2.4GHz
HDMI™	HDMI™ 2.0 (CEC HDCP 2.2), 4K X 2K @60 fps
AV	
PoE (Power over Ethernet)	
SPDIF/IEC958	
IPTV OTT	IPTV OTT

XXXXXXXXXXXXXXXXXXXXXXXXXXXX	
XXXXXXXXXXXXXXXXXXXX	Miracast, Kodi, Airplay, Skype Chatting, Picasa, Youtube, Flickr, Facebook, XXXXXXXXXXXXXXXXXXXX XXX
XXXXXXXXXXXXXXXXXX X	XXXXXXXXXXXXXXXXXXXXXXXXXXXX XXXXXXXXXXXXXXX Android XXXXXXXXXXXXXXXXXXXX XXXXXXXXXXXXXXXXXXXX XXX


Picture Show



Indicator Light Port





Micro SD Card

USB

USB



AV Port

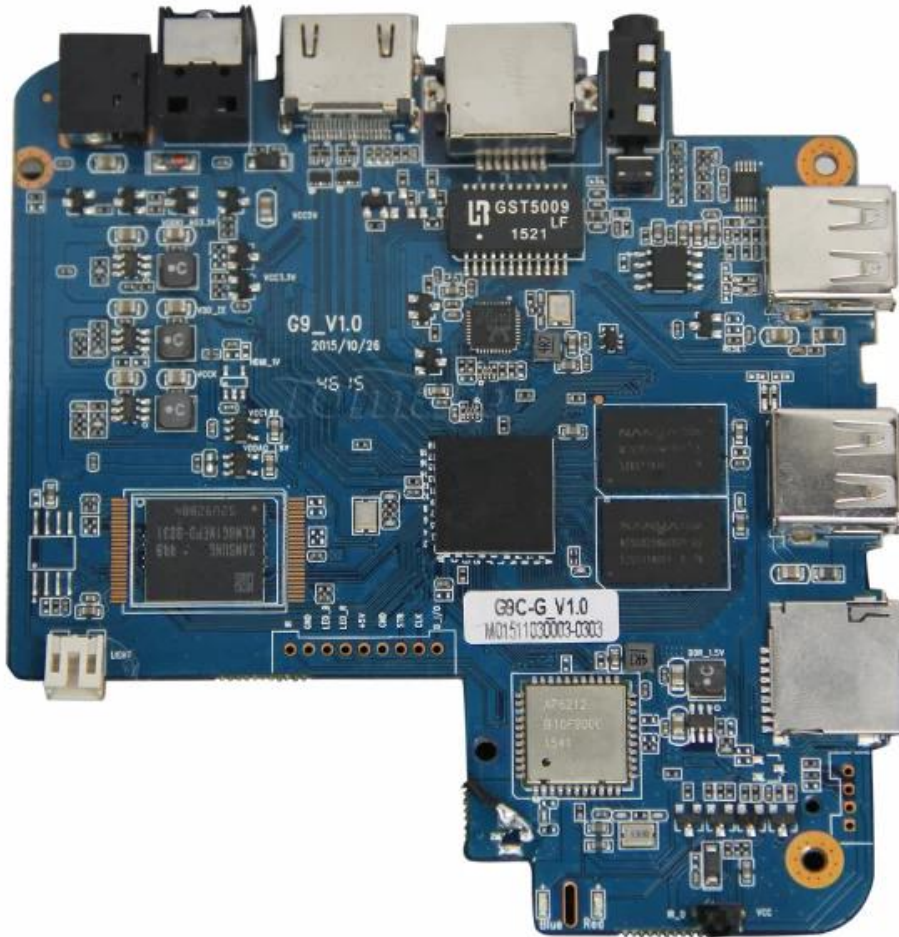
RJ 45 ETHERNET

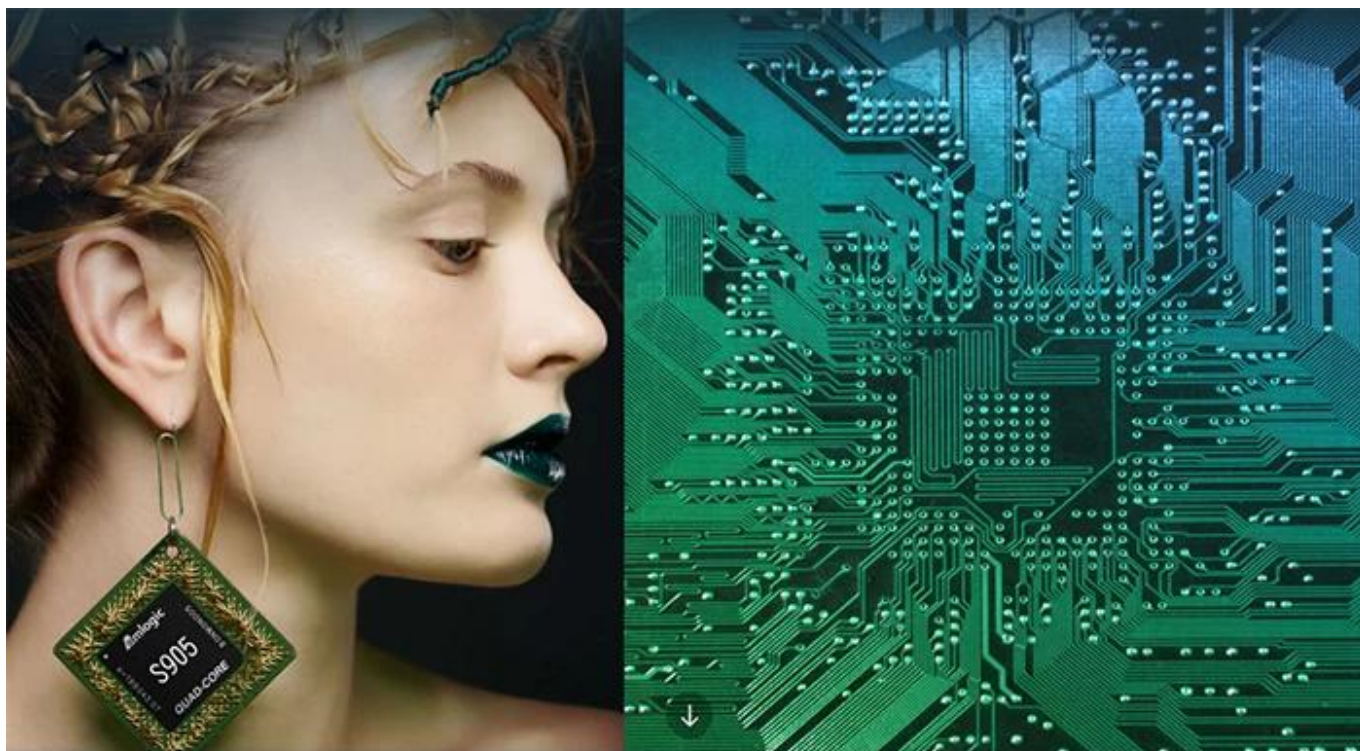
HDMI™

Optical Port

Power Port







S905

64-Bit
Quad Core
Cortex A53

4K

H.265
@60fps

HDMI 2.0
HDCP 2.2

TSMC
28NM

DRM



64 bit CPU,

While maintaining the same power consumption, the computing power of CPU has also been greatly improved.

With 4K2K decoding capabilities,
it make 4K become the standard.



The color quantity is increase by 60 times more than the previous generation.



10 bit decoding, it could highest support 1.07 billion color,
Compared to the previous generation of 16.7 million colors, it increase by 60 times.

The sound upgrade,
while supporting Dolby Digital Plus and DTS.



3 + 2 core high-frequency GPU,
it make the TV turn into the PlayStation.



The single core CPU frequency increase of 25%, 5-core computing speed can be achieved by the previous generation 8-core, it allowing you to experience smooth gaming.

Support 802.11ac WiFi protocol.

200 Mbps
实际速率

120 Mbps
上一代实际速率



Wireless projection the image&video
of the phone/computer onto the TV.



Miracast



Airplay



DLNA



SMB
共享协议



Intel@WIDI

Equipped with smart contiguous
memory allocation technology,
make the system running more smoothly.





Unforgettable visual
experience.

1920 * 1080 HD



Support 3D



1080P



Ultra Wide Vision

It's all about speeding up.



1G DDR3 dual channel memory and 8GB eMMC high speed flash memory.

The dual channel memory runs 1080p HD videos and large games flawlessly,
while the eMMC high speed flash memory controls apps, games, and multi-media storage with ease.

Everything comes alive with 3D.



Experience home entertainment in 3D!



S905

One of industry's first multimedia SoCs with 64-bit architecture, S905 is designed to deliver immersive theatre-level home entertainment to the users with excellent audio and video processing capabilities. It also supports operator-level security and is a perfect choice for OTT/IPTV/DVB STB, TV dongle and smart home applications.

Amlogic S905 SoC supports HDMI 2.0 and Android TV. It is a perfect choice for TV Box applications.

1. Amlogic S905 SoC supports HDMI 2.0:

Amlogic S905 SoC supports HDMI 2.0, which provides 4K @ 60 FPS video output. It also supports HDCP 2.2 for content protection.

2. 如何安裝 Android TV 應用程式：

TV Box 安裝 Android 應用程式，請前往 Google Play Store 搜尋並安裝您所需的應用程式。安裝後，您可以在電視主畫面中看到該應用程式的圖示，點擊即可啟動。

3. 如何安裝 Android TV 應用程式：

Android TV 應用程式安裝後，您可以在電視主畫面中看到該應用程式的圖示。如果您無法找到該圖示，請前往電視的「應用程式」或「智慧電視」選單，按「安裝」或「更新」按鈕。

4. 如何安裝 Android TV 應用程式：

Smart TV Box 支援多種連接埠，包括 HDMI 2.0、USB、Wi-Fi 和藍牙。請確保您的電視具有相應的連接埠，並按照說明書進行連接。

5. 如何安裝 Android TV 應用程式：

Google Play Store 提供多種應用程式，包括電視盒、流媒體服務和遊戲。請前往 Google Play Store 搜尋並安裝您所需的應用程式。

6. 如何安裝 Android TV 應用程式：

TV Box 安裝 Android 應用程式，請前往 Google Play Store 搜尋並安裝您所需的應用程式。安裝後，您可以在電視主畫面中看到該應用程式的圖示。

7. 如何安裝 Android TV 應用程式：

USB 和 microSD 卡是安裝 Android TV 應用程式的常見方法。請將應用程式安裝到 USB 或 microSD 卡中，然後將卡插入電視。

8. 如何安裝 Android TV 應用程式：

電視盒安裝 Android 應用程式，請前往 Google Play Store 搜尋並安裝您所需的應用程式。安裝後，您可以在電視主畫面中看到該應用程式的圖示。

9. 如何安裝 Android TV 應用程式：

電視盒安裝 Android 應用程式，請前往 Google Play Store 搜尋並安裝您所需的應用程式。安裝後，您可以在電視主畫面中看到該應用程式的圖示。

10. 如何安裝 Android TV 應用程式：

Smart TV Box

HDMI 2.0

Android TV Box