

Android 10

Android 10	
Processor	Allwinner H616 Quad Core ARM Cortex A53
GPU	G31
RAM	DDR3: 4GB
Storage	eMMC: 32GB (Expandable: 64GB)
OS	Android 10.0
Network	IEEE 802.11b/g/n/ac
Video Engine (AVE)	
Video Engine (AVE)	<p>Video Engine (AVE) supports 4Kx2K@60fps, 1080P@60fps, 1080P@30fps, 720P@60fps, 720P@30fps, 480P@60fps, 480P@30fps, 360P@60fps, 360P@30fps, 240P@60fps, 240P@30fps, 180P@60fps, 180P@30fps, 144P@60fps, 144P@30fps, 108P@60fps, 108P@30fps, 72P@60fps, 72P@30fps, 48P@60fps, 48P@30fps, 36P@60fps, 36P@30fps, 24P@60fps, 24P@30fps, 18P@60fps, 18P@30fps, 14P@60fps, 14P@30fps, 10P@60fps, 10P@30fps, 7P@60fps, 7P@30fps, 5P@60fps, 5P@30fps, 4P@60fps, 4P@30fps, 3P@60fps, 3P@30fps, 2P@60fps, 2P@30fps, 1P@60fps, 1P@30fps.</p> <ul style="list-style-type: none"> - VP9 2 4Kx2K@60fps - H.265 Main10@L5.1 4Kx2K@60fps 6K@30fps - AVS2-P2 4Kx2K@60fps - H.264 BP/MP/HP@L4.2 4Kx2K@30fps - H.263 BP 1080P@60fps - MPEG-4 SP/ASP@L5 1080P@60fps (ISO-14496) - MPEG-2 MP/HL 1080P@60fps (ISO-13818) - MPEG-1 MP/HL 1080P@60fps (ISO-11172) - Xvid 1080P@60fps - Sorenson 1080P@60fps - VP8 1080P@60fps - AVS/AVS JiZhun 1080P@60fps - WMV9/VC1 SP/MP/AP 1080P@60fps - JPEG HFIF 45MPPS - MJPEG JPEG (ISO/IEC-10918) - JPEG, *mkv, *.wmv, *.mpg, *.mpeg, *.dat, *.avi, *.mov, *.iso, *.mp4, *.rm, *.jpg
Audio	<p>MP3, AAC, WMA, RM, FLAC, Ogg 7.1/5.1</p> <ul style="list-style-type: none"> - DAC - 16 20 - DAC -8kHz 192kHz -95/-2dB SNR@A-weight, -80/-dB THDN, 0.55Vrms -One128*24 FIFO DAC TDM/PCM/I2S TDM/PCM 384kHz x32bits x 8ch 96kHz x 32bits x 32ch I2S 384kHz x 32bits x 8ch PDM CIC, LPF HPF DMIC 8 DAC PCM I2SPCM
I/O	
1 * HDMI	4K*2K UHD, HDMI 2.0A
1 * Camera	480i/576i
3 * USB	3*USB 2.0

1 * 红外线 IR	支持红外遥控
1*RJ45	支持有线网络
1 * 内存 TF	支持 4GB/8GB/16GB/32GB/64GB
接口	支持 5V/2A;支持USB接口. 接口类型: USB
接口	
接口	HD JPEG, BMP, GIF, PNG, TIF
接口	支持 蓝牙 4.0 版本 低功耗 蓝牙 4.0 版本 低功耗
接口	支持 Netflix, Hulu, Flixster, Youtube 应用 支持 Android Market, Amazon App Store 应用 支持 HDD, 支持 U, 支持 TF



4K HDR

Smart TV Box

Cortex-A53

Mali-G31

Quad-Core

OpenGL 3.2

OpenCL 2.0

Vulkan 1.1

ALLWINER[®]
H616

A detailed 3D rendering of an Allwinner H616 processor chip mounted on a dark blue printed circuit board (PCB). The chip is square with a glowing blue border and features the Allwinner logo and 'H616' text. The PCB is populated with various components, including capacitors and other smaller chips, all illuminated with a cool blue light. The background shows the intricate circuit traces of the board.

Android 10

Large storage, can hold more applications you like



Chrome



Netflix



YouTube



KODI



Passed GTVS test, featuring 4K 60fps

H.265 decoding

4K 60fps

VP9 decoding

4K 60fps

AVS decoding

4K 60fps





Non Anti-shake

Other models

Our model

Anti-shake

SDR

HDR



Other models

Our model

3D Denoise



Airplay 

DLNA 

Miracast 

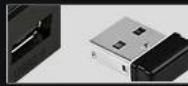
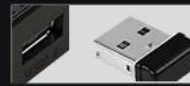


2.4G/5G WiFi+BT5.0



Other models

Our model



DC

HDMI

AV

USB2.0

USB2.0



OPTICAL

ETHERNET

USB2.0

TF CARD



Package Contents



Device



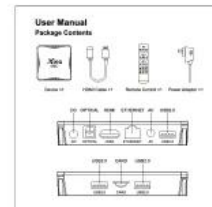
IR Remote Control
(Battery not Included)



Power Supply



HDMI Cable



User Manual

Product comparison

Parameter \ Chip	H616	RK3318	S905X3
CPU	Quad Core Cortex-A53	Quad core Cortex-A53	Quad-core Cortex-A55
GPU	Mali G31 OPenGL ES 3.2	Mali 450 OpenGL ES 2.0	Mali G31 OpenGL ES 2.0
H.265 decoding	4K@60fps / 6K@30fps	4K@60fps	4K@60fps
OS	Android 10	Android 9.0	Android 9.0
Frequency	1.35GHz	1.2GHz	1.2GHz
Run Score	57934	49320	49620

* The running score data is only a single test result of professionals

[Streaming Media Player](#)

Wi-Fi, USB, HDMI