

# Amlogic S905W 2GB RAM 16GB ROM

## Processor and Core Information

Processor	Amlogic S905W ARM Cortex A53 @2GHz
GPU	Penta-core Mali-450MP GPU@750MHz,
RAM	DDR3 1GB (Total: 2GB)
Storage	eMMC 8GB (Total: 16GB)
Network	IEEE 802.11b/g/n
Ports	1 * HDMI 4K*2K UHD, HDMI 2.0A
	1 * 480i/576i
	2 * USB, 1 * USB
Audio	1 * IR
	1*RJ45
	1 * TF 4GB/8GB/16GB/32GB/64GB

## Software and OS

OS	Android 7.1.2
Video Engine	* AMLogic video Engine (AVE)
Video Formats	* VP9 4K*2K -H.265 HEVC MP-10@L5.1 4K*2K@ -H.264 AVC HP@L5.1 4K*2K -H.264 MVC 1080P@60fps -MPEG-4 ASP@L5 1080P@60fps(ISO-14496) -WMV/VC-1 SP/MP/AP 1080P@60fps -AVS-P16(AVS) /AVS-P2 JiZhun 1080P@60fps -MPEG2 MP/HL 1080P@60fps -MPEG1 MP/HL 1080P@60fps -RealVideo 8/9/10 1080P@60fps * 1080P H.264 60fps * HDR10 HLG HDR * *.mkv,*.mpg,*.wmv,*.mpeg,*.dat,*.avi,*.mov,*.iso,*.mp4,*.rm *.jpg
Image Formats	* JPEG H.264 - JPEG - H.264 1080P@60fps
Audio Processor	MediaCPU DSP MP3,AAC,WMA,RM,FLAC,Ogg 7.1/5.1 DAC
Audio Output	SPDIF/IEC958 PCM PCM I2SPCM
Image Formats	HD JPEG, BMP, GIF, PNG, TIF
Streaming	Netflix, Hulu, Flixster, Youtube
App Store	Android Market, Amazon App Store
Storage	HDD, U, SD/MMC
Apps	SKYPE, MSN, Facebook, Twitter, QQ
DLNA	DLNA
USB	2.4G

Additional Information:

□□□□□□□□ \*1  
□□□□□□□□□□□□□□ \*1  
□□□□□□□□□□□□□□ \*1  
□□□□□□□□□□□□□□ \*1  
□□□□□□□□□□□□□□ \*1

# Smart Box



## Configuration table

<b>@mlogic</b> S905W	<b>Android</b> 7.1.2	<b>CPU</b> 4 Core 64bit
<b>ARM</b> Cortex A53	<b>GPU</b> 5 Core Mali-450	<b>LAN</b> 100M
<b>H.265</b> HEVC	<b>VP9</b> HDR10	<b>WiFi</b> 2.4G
<b>4K</b>		<b>eMMC</b>



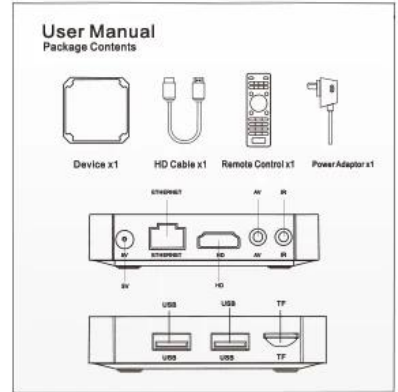
## Smart Box



**So small, but Powerful...**



# Smart Box



## Smart Box



**Remote Control,  
Any where,  
Any angle.**

**The box can paste into the wall or TV and others**

- 1. Magic tape**
- 2. Pothook designed**
- 3. Dual IR desined. Remote control easy.**



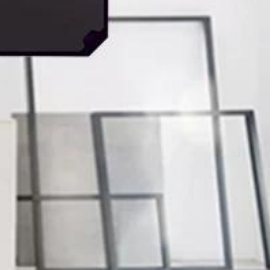
# Smart Box



**can paste on the wall**



**Remote Control,  
Any where,  
Any angle.**





S905W<sub>mini</sub> Smart Box



**Android 7.1.2 Ready**



Android **N**  
Beta Build



# S905W mini Smart Box



4 Core  
A53

5 Core  
Mali450

HDR  
10bit





# S905W Smart Box

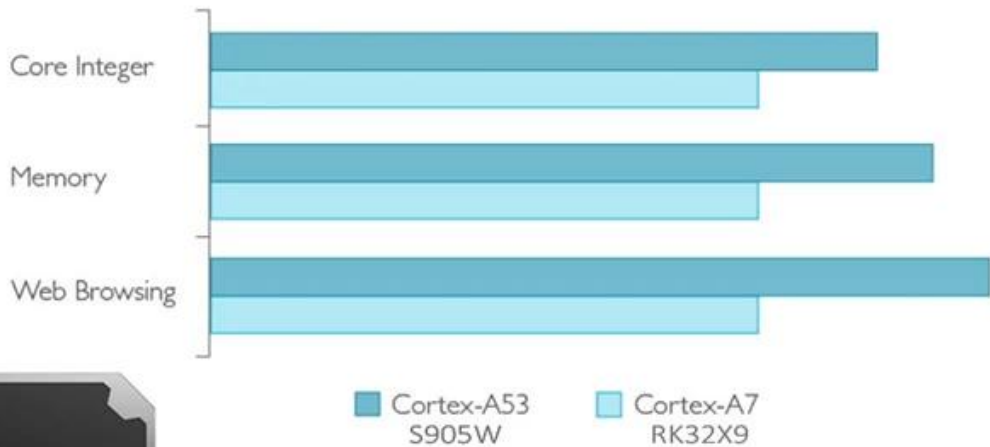


# S905W mini Smart Box



**S905W** using Cortex A53, Mali 450 GPU  
**The performance to cost ratio superelevation.**

## Cortex-A53 Performance Relative to Cortex-A7



## S905W mini Smart Box



### A HIGHER BIT-DEPTH AND WIDER COLOR GAMUT

8-bit only has 256 steps per channel, whereas 10-bit increases that to 1024 steps per channel. You can get better compression efficiency (i.e. better quality at same bitrates) with 10-Bit.



10 bit( $2^{10}$ )Color/Finer shades of Coors, Smoother color transitions from light to dark



8 bit( $2^8$ )Color/Grainy obvious, Unnatural Color Transitions





## S905W mini Smart Box



Your video/ music/photo from your Android devices /ios devices through DLNA /Airplay/onto big screen.

Enjoy the best gast best gaming& entertainment experience



AirPlay

Enjoy it on the big screen  
And the best speakers



Mirecast

# S905W<sub>mini</sub> Smart Box

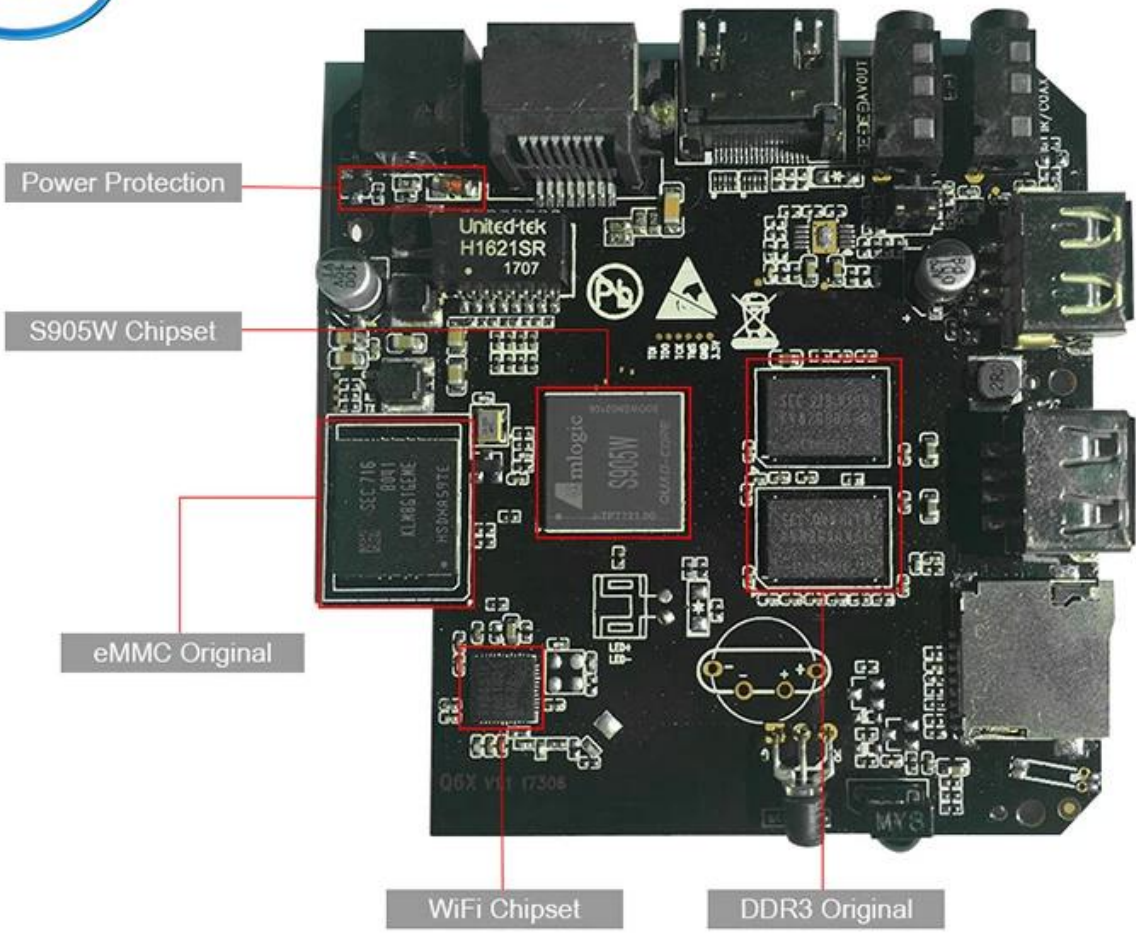


Penta-core Mali-450MP up to 750MHz,  
support UHD H.265/VP9 60fps 10-bit video decoding  
3D Games playing, 1080P online video chat





# S905W Smart Box



Mini Amlogic S905W 2GB RAM 16GB ROM

Amlogic S905W  
 RAM 2GB  
 ROM 16GB

4K Ultra HD  
 HDR

