

Android TV T972

Processor	Amlogic T972 Android
GPU	Amlogic T972(T962X2) ARM Cortex A55 1.98GHZ
Chipset	Penta Core ARM Mail-450
RAM	DDR4 2GB/4GB
Storage	16GB eMMC (128GB SD/USB)
OS	Android 9.0
CODEC	<ul style="list-style-type: none"> -Amlogic Video Engine (AVE-10) 4Kx2K@75fps - VP9 2-10 8Kx4K@24fps 4Kx2K@60fps -H.265 HEVC MP-10@L5.1 8Kx4K@24fps 4Kx2K@60fps -AVS2-P2 4Kx2K@60fps -H.264 AVC HP@L5.1 4Kx2K@30fps -H.264 MVC 1080P@60fps -MPEG-4 ASP@L5 1080P@60fps (ISO-14496) -WMV/VC-1 SP/MP/AP 1080P@60fps -AVS-P16(AVS) /AVS-P2 JiZhun 1080P@60fps -MPEG-2 MP/HL 1080P@60fps (ISO-13818) -MPEG-1 MP/HL 1080P@60fps (ISO-11172) - 8/9/10 1080P@60fps - MJPEG JPEG (ISO/IEC-10918) - JPEG - *.mkv,*.wmv,*.mpg, *.mpeg, *.dat, *.avi, *.mov, *.iso, *.mp4, *.rm *.jpg
Video	<ul style="list-style-type: none"> - VP9 2-10 8Kx4K@24fps 4Kx2K@60fps -H.265 HEVC MP-10@L5.1 8Kx4K@24fps 4Kx2K@60fps -AVS2-P2 4Kx2K@60fps -H.264 AVC HP@L5.1 4Kx2K@30fps -H.264 MVC 1080P@60fps -MPEG-4 ASP@L5 1080P@60fps (ISO-14496) -WMV/VC-1 SP/MP/AP 1080P@60fps -AVS-P16(AVS) /AVS-P2 JiZhun 1080P@60fps -MPEG-2 MP/HL 1080P@60fps (ISO-13818) -MPEG-1 MP/HL 1080P@60fps (ISO-11172) - 8/9/10 1080P@60fps - MJPEG JPEG (ISO/IEC-10918) - JPEG - *.mkv,*.wmv,*.mpg, *.mpeg, *.dat, *.avi, *.mov, *.iso, *.mp4, *.rm *.jpg
Audio	<p>MP3, AAC, WMA, RM, FLAC, Ogg, Dolby DTS Audio 7.1/5.1</p> <p>VAD AEC</p> <p>TDM/PCM/I2S 3 TDM/PCM 384kHz x32 x 8ch</p> <p>96kHz x 32 x 32ch I2S 384kHz x 32 x 8ch</p> <p>PDM CIC, LPF HPF</p> <p>DMIC 8</p> <p>SPDIF/IEC958</p> <p>L/R 2 L/R 2</p> <p>I2S PCM</p> <p>Audio EQ/DRC</p>
Video Format	HD MPEG1/2/4, H.265/HEVC, HD AVC/VC-1, RM/RMVB, Xvid/DivX3/4/5/6, RealVideo8/9/10
Video Codec	Avi/Rm/Rmvb/Ts/Vob/Mkv/Mov/ISO/wmv/asf/flv/dat/mpg/mpeg
Audio Codec	MP3/WMA/AAC/WAV/OGG/DDP/TrueHD/HD/FLAC
Image Format	HD JPEG/BMP/GIF/PNG/TIFF

1 * LVDS 40pin 2.0
 1 * V-By-one
 HDMI*3
 4 * 2.5. 10W8Ω@2
 *1 10M/100M RJ45
 2.4G WIFIBT (WiFi 2.4G/5G)
 PCIE(4)x1
 USB OTG * 1
 USB*4
 *2, 6pin 2.0
 *1, 7pin 2.0 LED
 *4
 *1
 *1

1*3.5
 1 * LVDS 40pin 2.0 8bit / 10bit
 1 * V-By-one
 HDMI*3
 4 * 2.5. 10W8Ω@2
 *1 10M/100M RJ45
 2.4G WIFIBT (WiFi 2.4G/5G)
 PCIE(4)x1
 USB OTG * 1
 USB*4
 *2, 6pin 2.0
 *1, 7pin 2.0 LED
 *4
 *1
 *1

USB2.0

USB OTG * 1

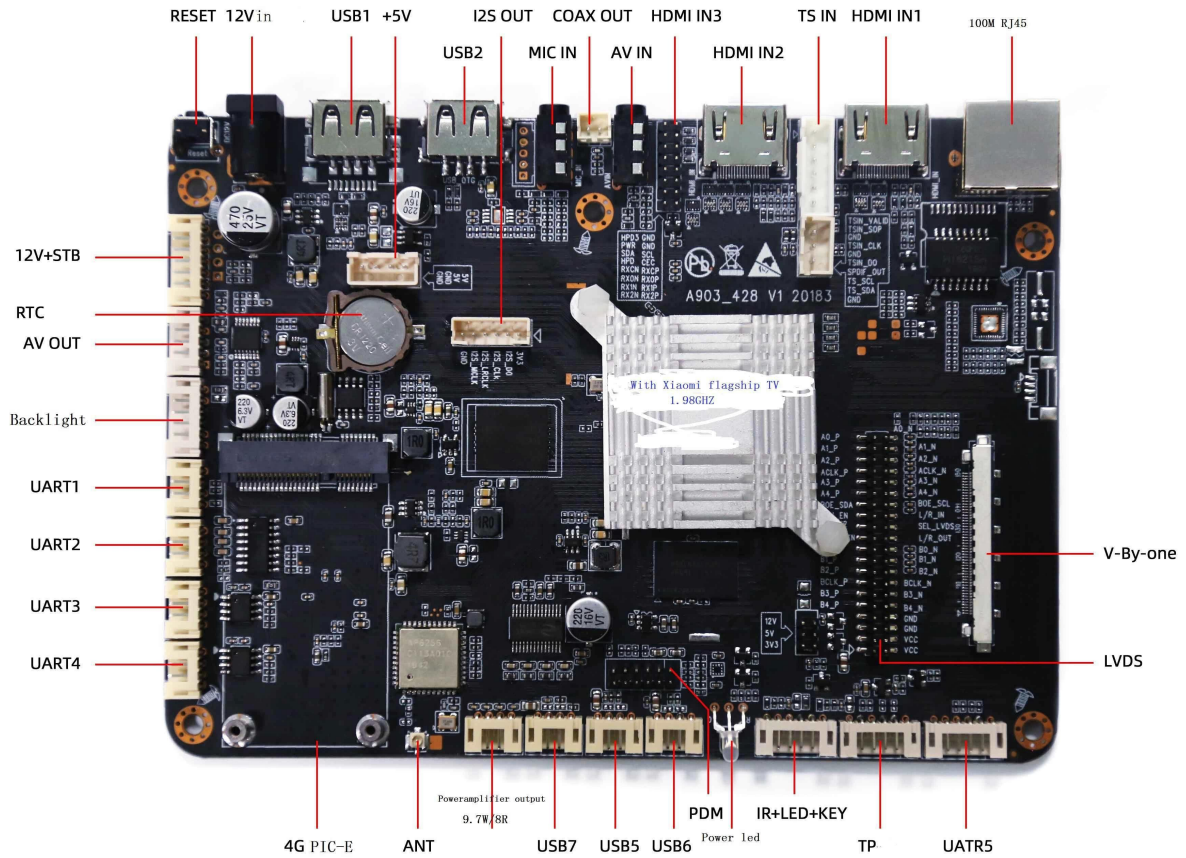
*2, 6pin 2.0
 *1, 7pin 2.0 LED
 *4
 *1
 *1

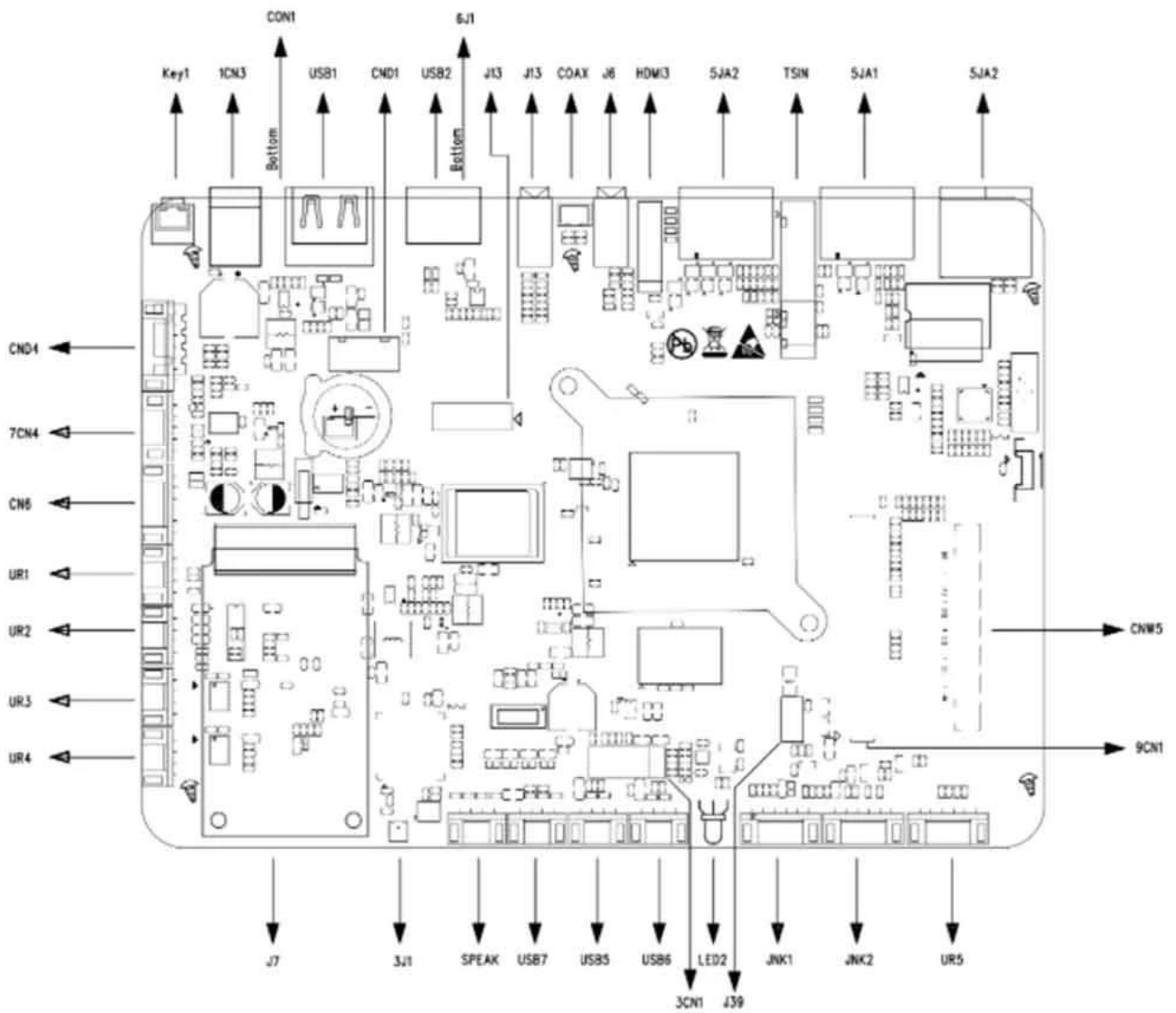
*2, 6pin 2.0
 *1, 7pin 2.0 LED
 *4
 *1
 *1

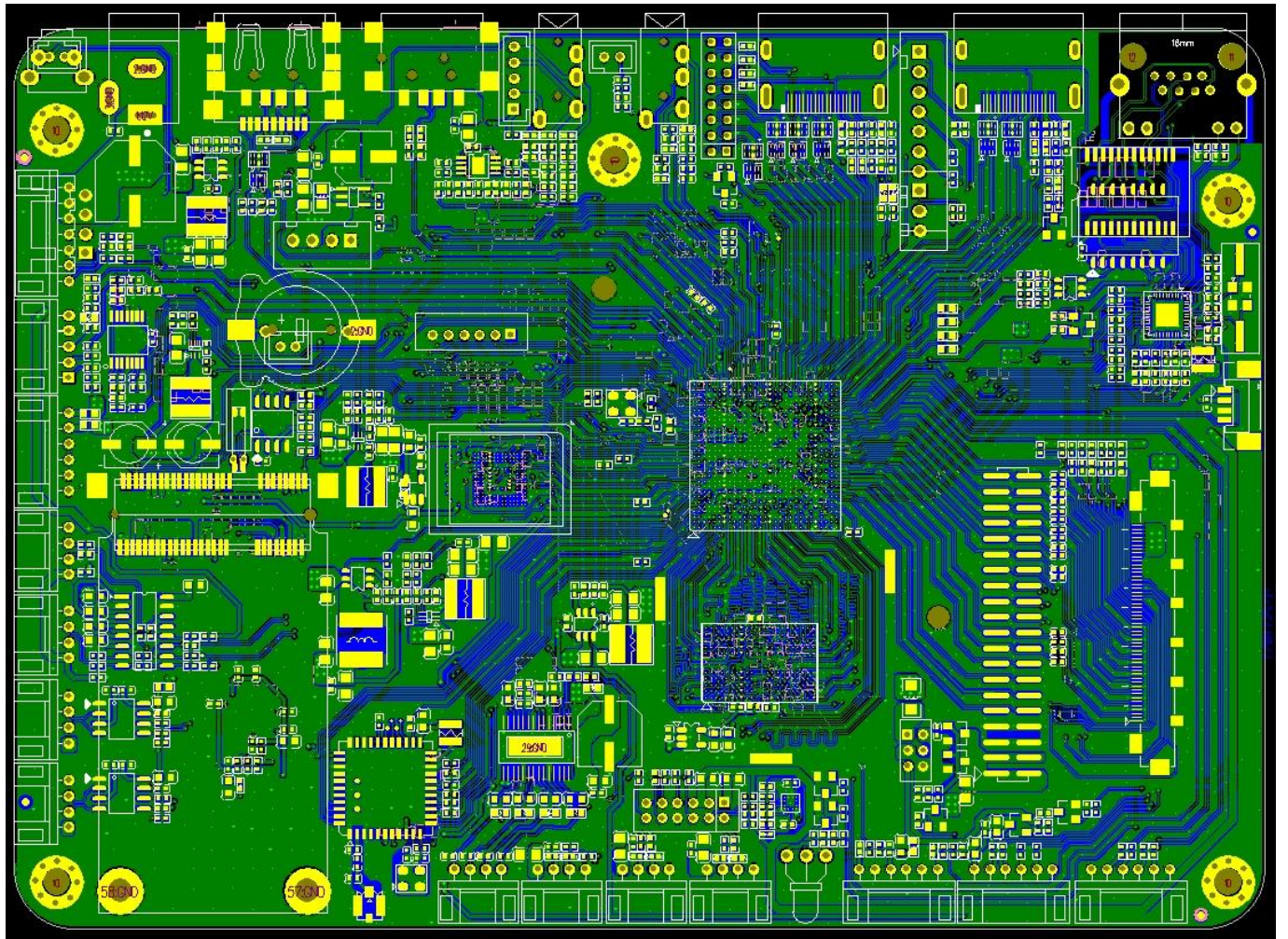
STB, 5VSB, 5V, 12V, 12pin 2.0

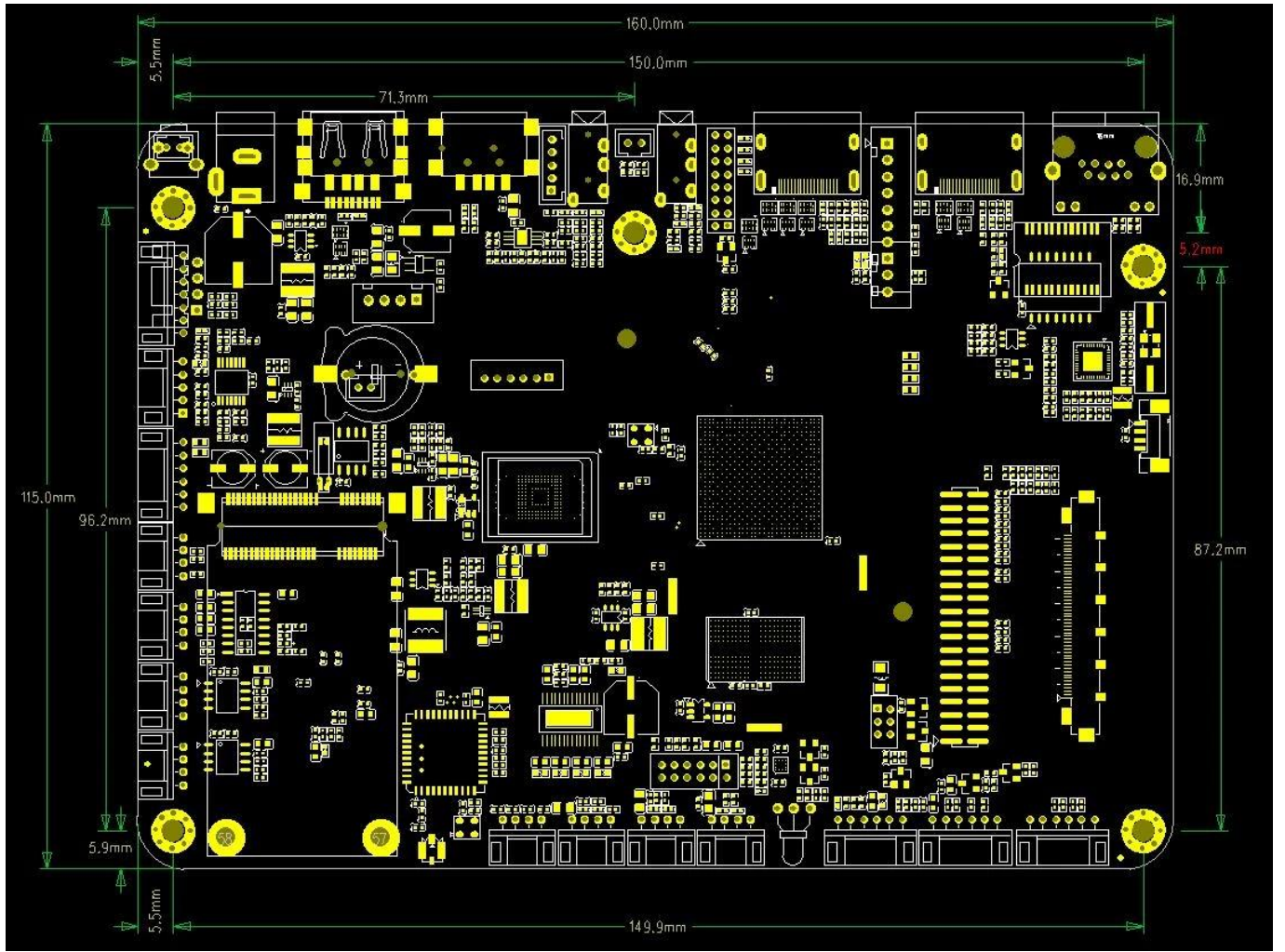
STB, 5VSB, 5V, 12V, 12pin 2.0
 12V / 4pin 2.54 12V / 2.5DC

ONENUTS









1920x1080Hz
CEDS/CHPI/CMPI/iSP 12 UHD
UHD TCON 4Kx2K 60Hz
3 LCD
Dithering LCD

3x HDMI 2.1 Dynamic HDR, ARC, HDCP 1.4 /2.2, 4Kx2K@60
2x CVBS 480i/576i
CVBS (PAL/NTSC)
ITU 601/656 RGB565 8, CCIR656, CCIR601, YUV422, YCbCr422

MP3, AAC, WMA, RM, FLAC, Ogg, Dolby DTS Audio
7.1/5.1
VAD AEC
TDM/PCM/I2S 3 TDM/PCM 384kHz x32 x 8ch
96kHz x 32ch I2S 384kHz x 32 x 8ch
PDM CIC, LPF HPF DMIC
8
SPDIF/IEC958
L/R 2 L/R 2
I2S PCM
Audio EQ/DRC

NTSC, NTSC-J, PAL-BG, PAL-DK1, PAL-I, PAL-DK, PAL-M, PAL-N, SE- CAM-DK2,
SECAM-DK3, SECAM-L ATV
BTSC, A2, EIA-J NICAM
V-chip
DTMB/DVB-C/ DTV
Build-in VIF demodulator IF

DTV
3x Transport stream (TS) demux
PWM, I2C SPI
ISO 7816

DRAM 32 4GB
JEDEC DDR3-2133 /DDR3L-2133 /DDR4-2666 /LPDDR3-2133
/LPDDR4-3200 SDRAM
SDSC/SDHC/SDXC SDIO 1 4
2.x/3.x/4.x DS/HS UHS-I SDR104
eMMC 1/4/8
5.0 HS400
SLC NAND
OTP 4K

Processor

IEEE 802.3 10/100/1000M Ethernet MAC RGMII

PHY 10/100M

WiFi/IEEE802.11 USB SDIO

Bluetooth USB UART

WIFI BT

I/O

USB I/O USB 2.0 USB OTG

UART I2C PWMs SPI

IR-blaster

SAR ADC 10 4

IO

DMA

24 MHz

24 MHz

ICE/JTAG

System

CPU, DRAM

PLL

I/O 1.8V 3.3V

1.8V 3.3V

Security

(TEE) Trustzone

OTP, DRAM

RNG

RNG

Trusted Video Path (TVP) SecureOS

SecureOS

IO

IO

Package

FCBGA, 19 x 19, 0.65, RoHS

Amlogic T972

Amlogic T972

Amlogic T972

Amlogic T972

Amlogic T972

1. **Amlogic T972**: Amlogic T972 Android Amlogic T972 4K
2. **4K Ultra HD**: 4K Ultra HD Android TV Box Amlogic T972

Android TV Box T972
Android TV Box T972
Android TV Box T972
Android TV Box T972