

4K Amlogic S922X



<p>Amlogic S922X / S905D3 / T972</p> <p>V-By-One; Direct 4K Dot Screen; Android 9.0 Or Above</p> <p>www.sztomato.com</p>	
<p>4K Amlogic S922X</p>	<p>Amlogic S922X ARM® Cortex™ A73 64 ARM® Cortex™ A53</p>
<p>GPU ARM Mali™-G52 MP4</p>	<p>2GB/4GB LPDDR4</p>
<p>16GB/64GB eMMC</p>	<p>Android 9.0</p>
<p>CODEC</p>	<p>Amlogic Video Engine (AVE) HW UHD 4K H.265 75fps 1080p H.265/H.264 60fps 4Kx2K@60fps1x1080P@60fps "VP9-2 4Kx2K@60fps H.265 HEVC MP-10@L5.1 4Kx2K@60fps AVS2-P2 4Kx2K@60fps H.264 AVC HP@L5.1 4Kx2K@30fps H.264 MVC 1080P@60fps MPEG-4 ASP@L5 1080P@60fps (ISO-14496) WMV/VC-1 SP/MP/AP 1080P@60fps AVS-P16(AVS) /AVS-P2 JiZhun 1080P@60fps MPEG-2 MP/HL 1080P@60fps (ISO-13818) MPEG-1 MP/HL 1080P@60fps (ISO-11172) RealVideo 8/9/10 1080P@60fps H.265/H.264 1080P@60fps MJPEG JPEG (ISO/IEC-10918) *.*mkv,*.wmv,*.mpg, *.mpeg, *.dat, *.avi, *.mov, *.iso, *.mp4, *.rm *.jpg Dolby VisionOptional, HDR10, HDR10, HLG PRIME HDR</p>
<p>JPEG H.265/H.264 1080P@60fps</p>	<p>HDMI 2.1 PHY CEC, Dynamic HDR HDCP 2.2, 4Kx2K@60 C VBS 480i/576i SD/HD/FHD: 480i/p, 576i/p, 720p, 1080i/p 4Kx2K MIPI 4 1920*1080 MP3, AAC, WMA, RM, FLAC, Ogg 7.1/5.1 SPDIF/IEC958 PCM TDM/PCM/I2S 3 84kHz x32bits x 8ch 96kHz x 32bits x 32ch and I2S 384kHz x 32x8ch PDM CIC, LPF HPF DMIC 8 DAC PCM I2SPCM</p>
<p>HD MPEG1/2/4, H.265/HEVC, HD AVC/VC-1, RM/RMVB, Xvid/DivX3/4/5/6, RealVideo8/9/10</p>	<p>Avi/Rm/Rmvp/Ts/Vob/Mkv/Mov/ISO/wmv/asf/flv/dat/mpg/mpeg</p>
<p>MP3/WMA/AAC/WAV/OGG/DDP/TrueHD/HD/FLAC</p>	<p>HD JPEG/BMP/GIF/PNG/TIFF</p>
<p>USB</p>	<p>USB2.0, 480Mbps/USB3.0, 5.1Gbps</p>

HDMI	HDMI 2.2/1ch Lvds/1ch EDP
接口	RJ45 100/1000M
存储/闪存	AP6398S(2.4G5.8G)
4G	PCI-E
存储	microSD (128G)
存储	SATA Max2TB (SATA)
电源	
电源	12V DC/3AΦ5.5*Φ2.5

Android

支持 Android 系统，支持 3 摄像头，支持 AI 人工智能，支持 4K 超高清视频，支持 HDR，支持 CPU arm cortex-a73，支持 dual core cortex-a53，支持 Neon SIMD，支持 Ave-10 4kx2k 75fps，支持 (TVP) MVC, MPEG-1/2/4, vc-1 /WMV, AVS, AVS , avs2 realvideo, MJPEG, H.264, h265-10, VP9, JPEG, h.265/h.264 1080p, 75fps 4kx2k @ 60fp (3840 * 2160) hdmi2.2 4K V HDCP 2.2, DAC, CVBS, Mipi DSI 4 I/O TDM, PCM, I2S SPDIF, PDM (dmic) 8 DVP, 2x2 WiFi (2.4G 5.8G) 4.1 Gigabit Ethernet

AI 12 s922x Amlogic CPU GPU, 4K HDR CPU S922x CPU arm cortex-a73 dual core cortex-a53 Neon SIMD Ave-10 4kx2k 75 (TVP) MVC, MPEG-1/2/4, vc-1 /WMV, AVS, AVS , avs2 realvideo, MJPEG, H.264, h265-10, VP9, JPEG h.265/h.264 1080p, 75 4kx2k @ 60fp (3840 * 2160) hdmi2.2 4K V HDCP 2.2, DAC, CVBS, Mipi DSI 4 I/O TDM, PCM, I2S SPDIF, PDM (dmic) 8 DVP, 2x2 WiFi (2.4G 5.8G) 4.1 Gigabit Ethernet

接口

o Amlogic ARM® Cortex™ A73 64 ARM® Cortex™ A53

GPU ARM Mali-G52 MP4

o HW UHD 4KH.265 75fps 10 1080p H.265/H.264 60fp sencoder

o Dolby Vision HDR10, HDR10, HLG PRIME HDR

o Cortex-M4 core

o TrustZone DRM

o WIFI, BT, USB, SD, I2C, SPI

o

Amlogic S922X Android OTT/IPTV Set Top Box (STB) CPU GPU, CODEC 4K HDR AP

CPU Big Quad-Core Cortex-A53 Dual-Core L2 CPU core NEON SIMD

GPU ARM Mali-G52 MP4 OpenGL ES 3.2 Vulkan 1.0 OpenCL 2.0 2.5D CPU GPU HDR10, HDR10, HLG PRIME HDR Dolby Vision, REC709/BT2020,

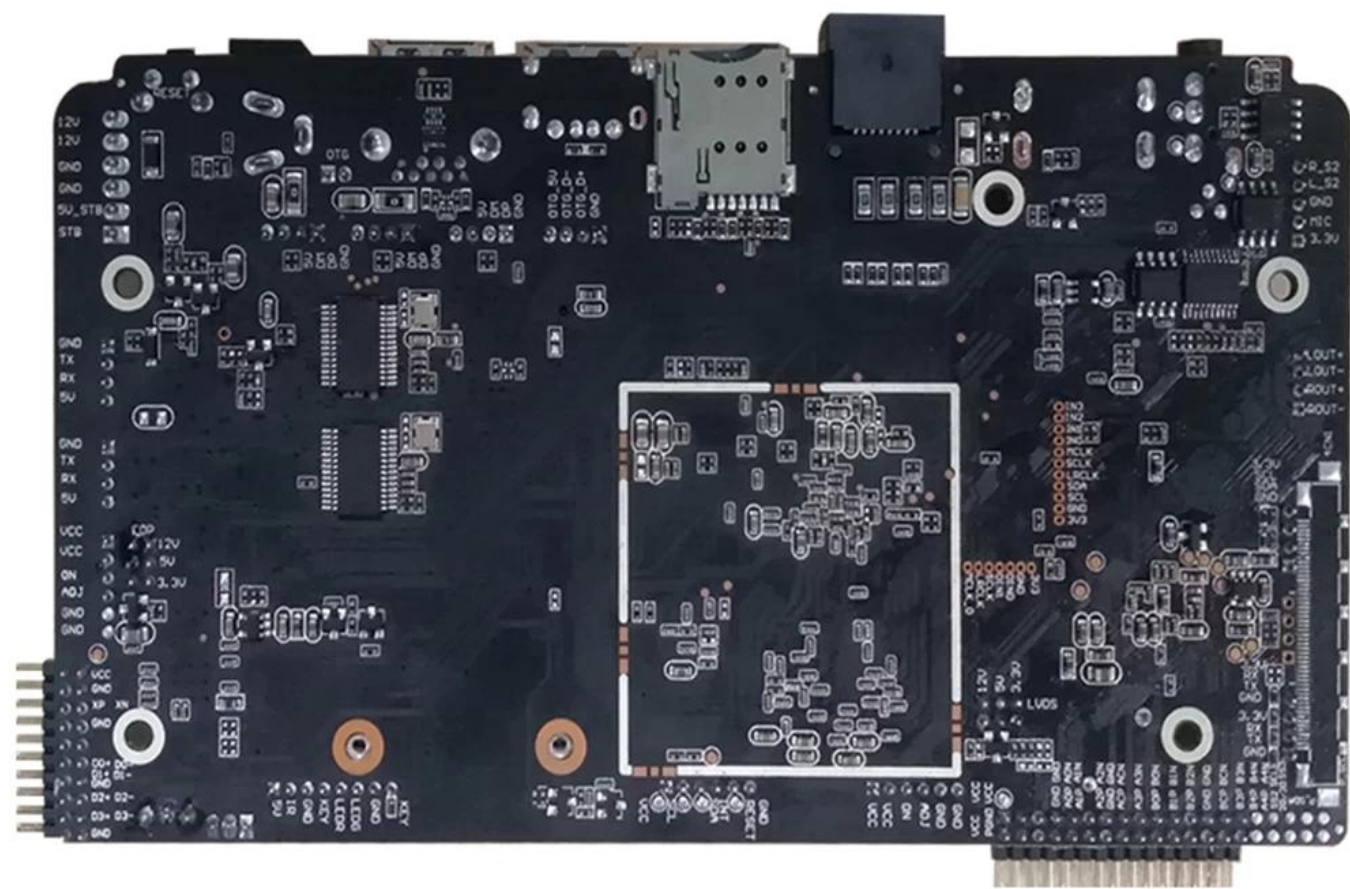
Amlogic Video Engine (AVE-10) Cortex-A53 CODEC AVE-10 4Kx2K 75fps Trusted Video Path (TVP) MVC, MPEG- 1/2/4, VC-1/WMV, AVS, AVS2 RealVideo, MJPEG, H.264, H265-10, VP9 JPEG H.265/H.264 1080p 60fps

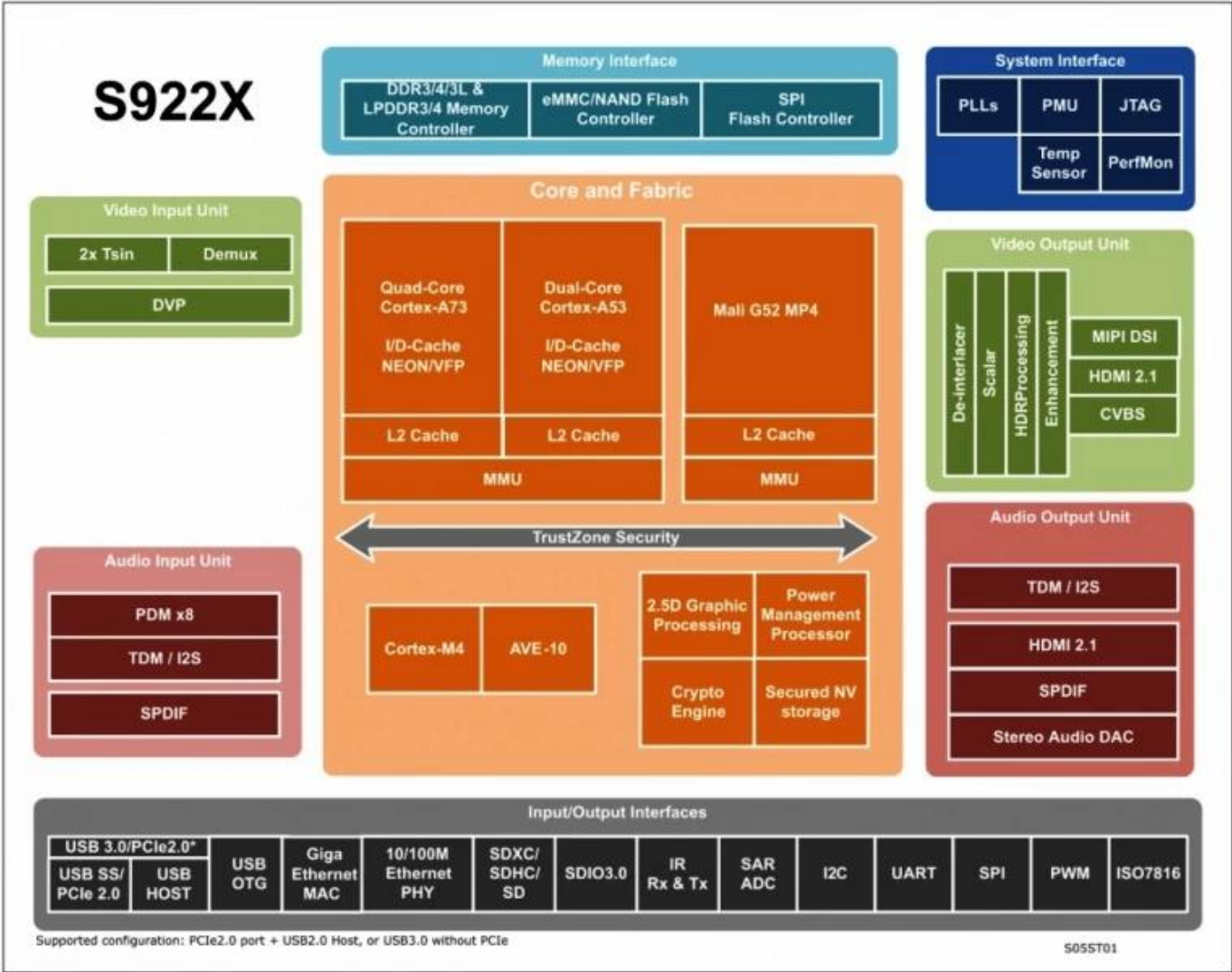
Amlogic S922X / HDMI2.1 3D, Dynamic HDR, CEC HDCP 2.2, DAC CVBS, 4 MIPI DSI, TDM, PCM, I2S SPDIF, PDM (DMIC) 8 DVP

Amlogic S922X demuxcan

10/100/1000M Ethernet MAC RGMII, 10/100M Ethernet PHY, USB XHCI OTG 2.0, USB3.0 PCIe







Amlogic S922X 4K Ultra HD SoC

Amlogic S922X 4K Ultra HD SoC is a powerful system-on-chip (SoC) designed for high-performance video processing and streaming. It features a quad-core Cortex-A73 and dual-core Cortex-A53, providing excellent video decoding and encoding capabilities. The SoC also includes a Mali G52 MP4 GPU, which is capable of rendering 4K Ultra HD video at 60 FPS. Additionally, the S922X supports various video input and output formats, including HDMI 2.1, MIPI DSI, and CVBS. The SoC is also equipped with a TrustZone security module, ensuring the integrity and confidentiality of the system. The S922X is a versatile SoC that can be used in a wide range of applications, from smart TVs and set-top boxes to streaming devices and digital signage.

- Amlogic S922X SoC: Amlogic S922X SoC is a powerful system-on-chip (SoC) designed for high-performance video processing and streaming. It features a quad-core Cortex-A73 and dual-core Cortex-A53, providing excellent video decoding and encoding capabilities. The SoC also includes a Mali G52 MP4 GPU, which is capable of rendering 4K Ultra HD video at 60 FPS. Additionally, the S922X supports various video input and output formats, including HDMI 2.1, MIPI DSI, and CVBS. The SoC is also equipped with a TrustZone security module, ensuring the integrity and confidentiality of the system. The S922X is a versatile SoC that can be used in a wide range of applications, from smart TVs and set-top boxes to streaming devices and digital signage.
- 4K Ultra HD: Amlogic S922X SoC is capable of decoding and encoding 4K Ultra HD video at 60 FPS. It supports various video input and output formats, including HDMI 2.1, MIPI DSI, and CVBS. The SoC also includes a TrustZone security module, ensuring the integrity and confidentiality of the system. The S922X is a versatile SoC that can be used in a wide range of applications, from smart TVs and set-top boxes to streaming devices and digital signage.
- RAM: Amlogic S922X SoC supports DDR3/4/3L and LPDDR3/4 memory. The SoC also includes a TrustZone security module, ensuring the integrity and confidentiality of the system. The S922X is a versatile SoC that can be used in a wide range of applications, from smart TVs and set-top boxes to streaming devices and digital signage.
- Wi-Fi and Gigabit Ethernet: Amlogic S922X SoC supports Wi-Fi and Gigabit Ethernet. The SoC also includes a TrustZone security module, ensuring the integrity and confidentiality of the system. The S922X is a versatile SoC that can be used in a wide range of applications, from smart TVs and set-top boxes to streaming devices and digital signage.
- HDMI, USB, and SD: Amlogic S922X SoC supports HDMI, USB, and SD. The SoC also includes a TrustZone security module, ensuring the integrity and confidentiality of the system. The S922X is a versatile SoC that can be used in a wide range of applications, from smart TVs and set-top boxes to streaming devices and digital signage.

በግልጽ የሚታወቁትን ጥያቄዎች ይጻፉ፡፡

6. በግልጽ የሚታወቁትን **Android TV**: በግልጽ የሚታወቁትን Android TV በግልጽ የሚታወቁትን
በግልጽ የሚታወቁትን ስም በግልጽ የሚታወቁትን Google Play Store

7. በግልጽ የሚታወቁትን:
በግልጽ የሚታወቁትን ስም በግልጽ የሚታወቁትን
በግልጽ የሚታወቁትን አድራሻ በግልጽ የሚታወቁትን

8. በግልጽ የሚታወቁትን:
በግልጽ የሚታወቁትን ስም በግልጽ የሚታወቁትን
በግልጽ የሚታወቁትን አድራሻ በግልጽ የሚታወቁትን

9. በግልጽ የሚታወቁትን:
በግልጽ የሚታወቁትን ስም በግልጽ የሚታወቁትን
በግልጽ የሚታወቁትን አድራሻ በግልጽ የሚታወቁትን

10. በግልጽ የሚታወቁትን:
በግልጽ የሚታወቁትን ስም በግልጽ የሚታወቁትን
በግልጽ የሚታወቁትን አድራሻ በግልጽ የሚታወቁትን

በግልጽ የሚታወቁትን [TV Box](#) ስም 4K Amlogic S922X
በግልጽ የሚታወቁትን አድራሻ በግልጽ የሚታወቁትን